

# Kwikset®

## NEW BURBANK LEVER



- Push Button
- ANSI/BHMA Grade 3 Certified Security
- ADA Compliant
- Lifetime Mechanical Warranty

Introducing the new Burbank lever which features push button locking. Kwikset's Multi-Family & Light Commercial products are created with both heavy duty residential and light commercial applications in mind, including retail, apartment buildings, assisted living facilities, and other multi-family housing.

### GREAT FOR:



Office



Multi-Family



Retail

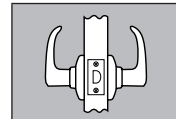
#1 SELLING U.S. LOCK BRAND

# NEW BURBANK LEVER

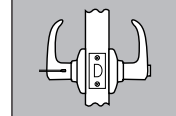
## Specifications:

<b>Door Prep</b>	Cross Bore 2 1/8". Edge Bore 1".
<b>Backset</b>	Adjustable to 2 3/8" or 2 3/4"
<b>Door Thickness</b>	1 3/8" - 1 3/4" standard
<b>Cylinder</b>	5-Pin Pin & Tumbler
<b>Latch</b>	RCAL, SCAL, WFAL
<b>Strikes</b>	ASA-1 t-strike, Full Lip SCS UL, Full Lip 1/4" RCS UL, T Strike
<b>Bolt</b>	1/2" throw
<b>Door Handling</b>	Reversible for right or left-handed doors
<b>ANSI/BHMA</b>	A156.2 Grade 3 (all functions except 488)
<b>UL</b>	Meets UL 3 hour fire rating for all functions
<b>ADA</b>	Lever functions satisfy 4.13.9 ADA requirements (except 488 Half Dummy)

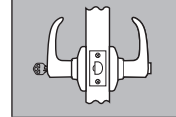
## Functions:



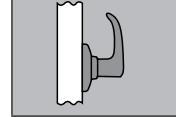
**407 Passage/Hall/Closet:**  
Both levers always free.



**408 Privacy/Bed/Bath:** Both levers locked or unlocked by push button inside. Outside lever unlocked by emergency key.

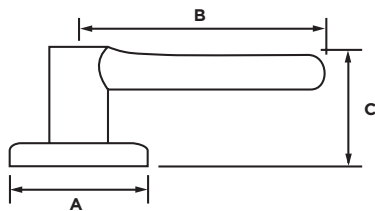


**438 Keyed Entry:** Both levers locked or unlocked by key outside or push button inside.



**488 Half Dummy Trim, Surface Mounted:**  
For doors where only a pull is required. Must specify right or left hand.

## Dimensions:



Design	A	B	C
Burbank™	2.56"	3.75"	1.96"



Passage



Privacy



Entry

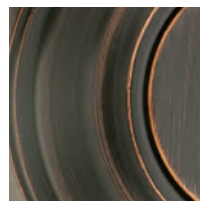


Half Dummy

## Finishes:



Polished Brass (3)



Venetian Bronze (11P)



Satin Nickel (15)



Polished Chrome (26)