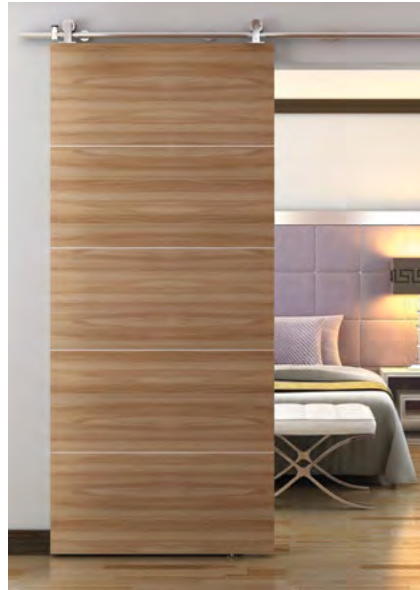


Barn Door Hardware

Kits | Components | Accessories



Barn Door Hardware

The contemporary interpretation of a classic architectural type, today's sliding barn door makes a powerful design statement. The possibilities are endless for interior doorways or room dividers in residential and commercial applications, whether adding definition to an open area, creating a cozy nook or saving space in a tiny room.

- Pantry or laundry room
- Ensuite bath
- Closet
- Home office

From rustic farmhouse chic to the cosmopolitan look of a postmodern loft, Knap & Vogt offers easy-to-install barn door hardware in styles to fit your installation and your design.



Contents

Stainless Steel Barn Door Hardware

Round Rail	4
Flat Rail	7

Aluminum Barn Door Hardware

Round Track	10
Flat Rail	16

Steel Barn Door Hardware

Flat Rail	18
Mini Flat Rail	21

Aluminium Wall-mounted Hardware

Metro	23
Urban	26

Handles, Pulls and Latches

Privacy Locks	30
---------------------	----

Stainless Steel Round Rail Kits and Accessories



FR-SSHK-72
Flat Rail
Face Mount
Hook



SS-TMSS-65
Round Rail
Top Mount
Stick

Stainless Steel Round and Flat Rail Hardware

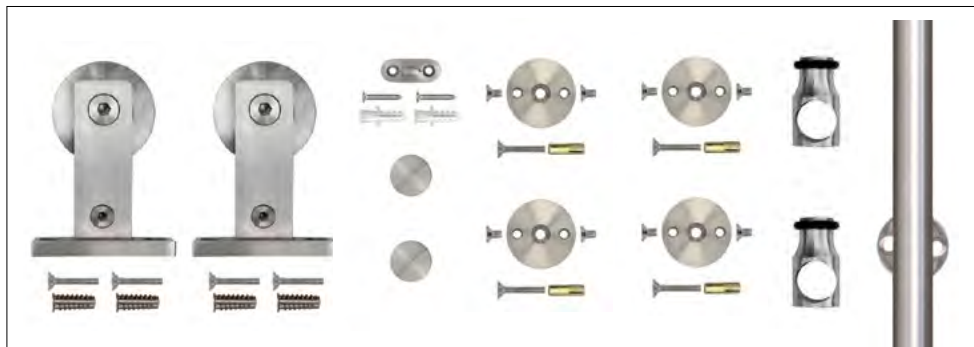
Sleek, ultra-modern styles compatible with glass or wood doors in many contemporary settings

- Variety of styles suitable for a wide range of door designs
- 304 stainless steel components built to last
- Complete, easy-to-install kits include: rail, hanger, stops, guide and all fasteners
- Supports doors up to 250 lbs.
- Available in 72", 78-3/4" and 96" lengths

Stainless Steel Round Rail Kits and Accessories

Complete Kits Include:

- Hanger (2)
- 78-3/4" Round Rail
- Mounting Plates (4)
- Door Stops (2)
- Floor Guide
- Anti-Jump Bumpers (2)
- Fasteners
- End Caps (2)



SS-TMSS-65

Top Mount Complete Kit

- Round Rail
- Wood Application
- 250 lb. Capacity
- Fasteners included

*Carriers shown to represent kit style;
not sold separately*



SS-TMSS-65
Stick

Face Mount Complete Kit

- Round Rail
- Wood or Glass Application
- 250 lb. Capacity
- Fasteners included

*Carriers shown to represent kit style;
not sold separately*



SS-FMSS-65
Strap Stick

Ceiling Mount

- Wood or Glass Application
- 135 lb. Capacity
- Fasteners included

Round rail sold separately



SS-CM-RR
Ceiling Mount

Round Rail Accessories



SS-RR-65 (pack of 5 pcs)
SS-RR-65-A (pack of 1 pc)
Round Rail with Mounting Brackets



SS-RR-C
Connector



SS-SP-SET
Tool Set



SS-SP-SET-1
Tool Set



SS-ECP
End Cap



SS-GWD
Wood Door Guide



SS-DTS
Door Stop



SS-GGD
Glass Door Guide



BD-FGP
Adjustable Door Guide,
Plastic Wheel
Fits 3/4" to 2-1/2" thick doors

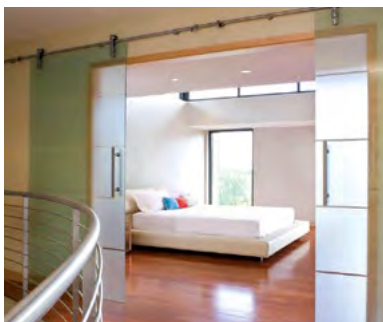


BD-FGM
Adjustable Door Guide,
Metal Wheel
Fits 1" to 2-3/4" thick doors

How to Order:

Single Door Solution:

- 1) Carrier Hardware Kit: Specify style.
Example: part number SS-TMSS-65, Top Mount Stick Hardware Kit.



Bi-Part Door Solution:

- 1) Order one carrier hardware kit per door.
Specify style.
Example: part number SS-TMSS-65,
Top Mount Stick Hardware Kit.
- 2) Connector: Specify round or flat.
Example: part number SS-RR-C,
Round Rail Connector.

Part Number	Description	Finish	Unit Pack		Master Carton	
			Qty	Weight	Qty	Weight
Stainless Steel Round Rail						
SS-RR-65	78-3/4" Round Rail with 4 Mounting Brackets	Stainless Steel	1	7.2 lbs. [3.2 kg.]	5	36.0 lbs. [16.3 kg.]
SS-RR-65-A	78-3/4" Round Rail with 4 Mounting Brackets	Stainless Steel	1	7.2 lbs. [3.2 kg.]	1	7.2 lbs. [3.2 kg.]
Stainless Steel Round Rail						
Top Mount Complete Kits						
SS-TMSS-65	78-3/4" Top Mount Stick	Stainless Steel	1	13.0 lbs. [5.8 kg.]	1	13.0 lbs. [5.8 kg.]
SS-TMSS-80	96" Top Mount Stick	Stainless Steel	1	13.0 lbs. [5.8 kg.]	1	13.0 lbs. [5.8 kg.]
Face Mount Complete Kits						
SS-FMSS-65	78-3/4" Mount Strap Stick	Stainless Steel	1	16.0 lbs. [7.4 kg.]	1	16.0 lbs. [7.4 kg.]
SS-FMSS-80	96" Mount Strap Stick	Stainless Steel	1	16.0 lbs. [7.4 kg.]	1	16.0 lbs. [7.4 kg.]
Ceiling Mount (rail sold separately)						
SS-CM-RR	Ceiling Mount	Stainless Steel	1	0.50 lbs. [0.2 kg.]	10	5.0 lbs. [2.2 kg.]
Stainless Steel Round Rail Accessories						
SS-RR-C	Round Rail Connector SS304 Satin Nickel	Stainless Steel	1	0.30 lbs. [0.13 kg.]	10	3.0 lbs. [1.3 kg.]
SS-SP-SET	Tool Set	Stainless Steel	1	0.20 lbs. [0.09 kg.]	1	0.20 lbs. [0.09 kg.]
SS-SP-SET-1	Tool Set	Stainless Steel	1	0.20 lbs. [0.09 kg.]	1	0.20 lbs. [0.09 kg.]
BD-FGP	Adjustable Door Guide for 3/4"–2-1/2" Doors, Plastic Wheel	Black	1	0.50 lbs. [0.2 kg.]	1	0.50 lbs. [0.2 kg.]
BD-FGM	Adjustable Door Guide for 1"–2-3/4" Doors, Metal Wheel	Black	1	1.2 lbs. [0.5 kg.]	1	1.2 lbs. [0.5 kg.]
Stainless Steel Replacement Parts						
SS-ECP	End Cap	Stainless Steel	1	0.10 lbs. [0.04 kg.]	1	0.10 lbs. [0.04 kg.]
SS-GWD	Guide for Wood Door	Stainless Steel	1	0.10 lbs. [0.04 kg.]	1	0.10 lbs. [0.04 kg.]
SS-DTS	Door Stop	Stainless Steel	1	0.30 lbs. [0.13 kg.]	1	0.30 lbs. [0.13 kg.]
SS-GGD	Guide for Glass Door	Stainless Steel	1	0.30 lbs. [0.13 kg.]	1	0.30 lbs. [0.13 kg.]

Stainless Steel Flat Rail Kit and Accessories

Complete Kit includes:

- 6' / 8' Flat Rail (1)
- Carriers (2)
- Right and Left End Stops (2)
- Anti-Jump Bumpers (2)
- Floor Guide (1)
- Fasteners
- Mounting Brackets (5)



Carrier shown to represent kit contents, styles shown below

FR-SSHK-72 / FR-SSHK-96

Face Mount style:

- Wood or glass application
- 250 lb. capacity

Carriers shown to represent kit style;
not sold separately



FR-SSHK-72 / FR-SSHK-96
Hook

Top Mount style:

- Wood application
- 250 lb. Capacity

Carriers shown to represent kit style;
not sold separately



FR-SSTM-72 / FR-SSTM-96
Top Mount

Flat Rail and Accessories



SS-FR-65 / SS-FR-65-A
Mounting Brackets included



SS-FR-C
Connector



FRSC-AOS
Soft-Close Add On Grey Finish



FR-BYP-SS
Bypass Bracket



BD-FGP
Adjustable Door Guide,
Plastic Wheel
Fits 3/4" to 2-1/2" thick doors



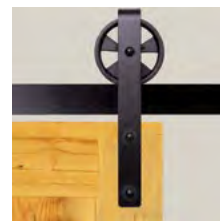
BD-FGM
Adjustable Door Guide,
Metal Wheel
Fits 1" to 2-3/4" thick doors

Stainless Steel Flat Rail Kit and Accessories

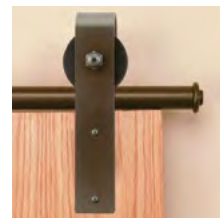
Part Number	Description	Finish	Unit Pack		Master Carton	
			Qty	Weight	Qty	Weight
Stainless Steel Flat Rail Complete Kits						
Face Mount style						
FR-SSHK-72	72" Flat Rail Stainless Hook	Stainless Steel	1	17.0 lbs. [7.7 kg.]	1	17.0 lbs. [7.7 kg.]
FR-SSHK-96	96" Flat Rail Stainless Hook	Stainless Steel	1	20.0 lbs. [9.1 kg.]	1	20.0 lbs. [9.1 kg.]
Top Mount style						
FR-SSTM-72	72" Flat Rail Stainless Top Mount	Stainless Steel	1	17.0 lbs. [7.7 kg.]	1	17.0 lbs. [7.7 kg.]
FR-SSTM-96	96" Flat Rail Stainless Top Mount	Stainless Steel	1	20.0 lbs. [9.1 kg.]	1	20.0 lbs. [9.1 kg.]
Stainless Steel Flat Rail						
SS-FR-65	78" Flat Rail with 5 Mounting Brackets	Stainless Steel	1	9.0 lbs. [4.0 kg.]	5	45.0 lbs. [20.4 kg.]
SS-FR-65-A	78" Flat Rail with 5 Mounting Brackets	Stainless Steel	1	9.0 lbs. [4.0 kg.]	1	9.0 lbs. [4.0 kg.]
Stainless Steel Flat Rail Accessories						
SS-FR-C	Flat Rail Connector SS304	Stainless Steel	1	0.30 lbs. [0.1 kg.]	10	3.0 lbs. [1.3 kg.]
FRSC-AOS	Flat Rail Soft-Close Add On	Gray	1	1.1 lbs. [0.5 kg.]	1	1.1 lbs. [0.5 kg.]
FR-BYP-SS	Flat Rail Bypass Bracket	Stainless Steel	1	1.0 lbs. [0.4 kg.]	1	1.0 lbs. [0.4 kg.]
BD-FGP	Adjustable Door Guide for 3/4"—2-1/2" Doors, Plastic Wheel	Black	1	0.50 lbs. [0.2 kg.]	1	0.50 lbs. [0.2 kg.]
BD-FGM	Adjustable Door Guide for 1"—2-3/4" Doors, Metal Wheel	Black	1	1.2 lbs. [0.5 kg.]	1	1.2 lbs. [0.5 kg.]



Santiago Series Products Shown in Bi-part Installation:
 (2) RTBK-06 - 6' Black Round Track
 (2) RT-SPBK-06 - Hardware Kit
 (1) RT-SPK - Splice Kit (1) RT-BPSBK - Bi-part



FRC-HK5-08
 Flat Rail
 Hook



RT-HK-BZ
 Round Track
 Salzburg



FR-BZTM-72
 Flat Rail
 Top Mount

Aluminum Round Track, Flat Rail and Hardware

Classic styles complement designs from rustic to vintage to industrial

- Wide variety of styles and finishes
- All tracks, rails, and components fabricated from sleek, durable, powder-coated aluminum
- Complete, easy-to-install kits include carriers, stops, guide and all fasteners
- Supports doors up to 250 lbs.
- Available in 4', 6' and 8' lengths

Aluminum Round Tracks and Kits

Round Tracks



RTBK-04
Black



RTBZ-04
Oil Rubbed Bronze



RTSN-04
Satin Nickel



Infinite wall mount locations
Easy to install
Expandable using splice kits

Kits Include:

(Track sold separately)

- Carriers (2)
- Floor Guide Set (1)
- Door Stops (2)
- Brackets (5)
- End Stop Kit (1)
- Fasteners

How to Order

Track is ordered separately from hardware kit.

Single Door Solution:

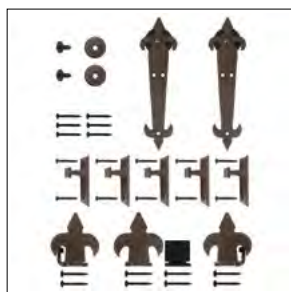
- 1) Track: Specify finish and length. Example: Part number RTBZ-06-A, oil rubbed bronze finish, 6' length.
- 2) Carrier Hardware Kit: Specify style and finish. Example: Part number RT-VSBZ-06, Venice carrier style, oil rubbed bronze finish.

Bi-Part Door Solution:

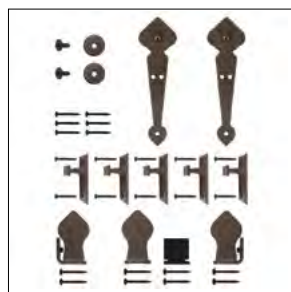
If using two doors that are 3' wide, order a 6' track per door, for a total of 12'. This allows the doors to clear the door opening when in the open position. Order one carrier hardware kit per door and one splice kit.

To Order:

- 1) Track: Specify quantity, finish and length. Example: Order 2 of part number RTBZ-06-A, oil rubbed bronze finish, 6' length each.
- 2) Carrier Hardware Kit: Specify quantity, style and finish. Example: Order 2 of part number RT-VSBZ-06, Venice carrier style, oil rubbed bronze finish.
- 3) Splice Kit: Order 1 of part number RT-SPK round rail splice kit.



RT-FDBZ-06
Barcelona Series
Shown in Oil Rubbed Bronze
Also available in Black



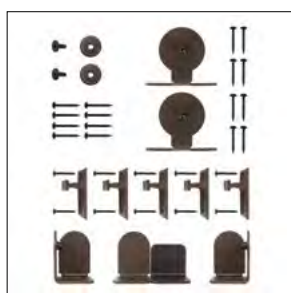
RT-SPBZ-06
Santiago Series
Shown in Oil Rubbed Bronze
Also available in Black



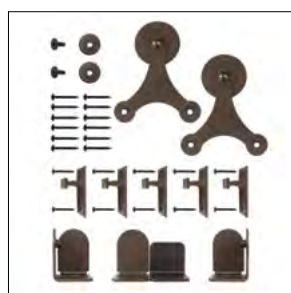
RT-HSBZ-06
Rushmore Series
Shown in Oil Rubbed Bronze
Also available in Black and
Satin Nickel



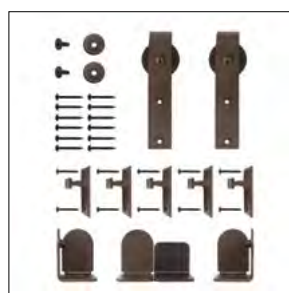
RT-VSBZ-06
Venice Series
Shown in Oil Rubbed Bronze
Also available in Black and
Satin Nickel



RT-TMBZ-06
Monte Carlo Series
Shown in Oil Rubbed Bronze
Also available in Black and
Satin Nickel



RT-TSBZ-06
Atlantis Series
Shown in Oil Rubbed Bronze
Also available in Black and
Satin Nickel



RT-HKBZ-06
Salzburg Series
Shown in Oil Rubbed Bronze
Also available in Black and
Satin Nickel



RT-STBZ-06
Macau Series
Shown in Oil Rubbed Bronze
Also available in Black and
Satin Nickel

Part Number	Description	Finish	Unit Pack		Master Carton	
			Qty	Weight	Qty	Weight
Aluminum Round Tracks						
RTBK-04	4' Round Track	Black	1	6.0 lbs. [2.7 kg.]	5	30.0 lbs. [13.6 kg.]
RTBK-04-A	4' Round Track	Black	1	6.0 lbs. [2.7 kg.]	1	6.0 lbs. [2.7 kg.]
RTBZ-04	4' Round Track	Oil Rubbed Bronze	1	6.0 lbs. [2.7 kg.]	5	30.0 lbs. [13.6 kg.]
RTBZ-04-A	4' Round Track	Oil Rubbed Bronze	1	6.0 lbs. [2.7 kg.]	1	30.0 lbs. [13.6 kg.]
RTSN-04	4' Round Track	Satin Nickel	1	6.0 lbs. [2.7 kg.]	5	30.0 lbs. [13.6 kg.]
RTSN-04-A	4' Round Track	Satin Nickel	1	6.0 lbs. [2.7 kg.]	1	6.0 lbs. [2.7 kg.]
RTBK-06	6' Round Track	Black	1	11.0 lbs. [4.9 kg.]	5	55.0 lbs. [24.9 kg.]
RTBK-06-A	6' Round Track	Black	1	11.0 lbs. [4.9 kg.]	1	11.0 lbs. [4.9 kg.]
RTBZ-06	6' Round Track	Oil Rubbed Bronze	1	11.0 lbs. [4.9 kg.]	5	55.0 lbs. [24.9 kg.]
RTBZ-06-A	6' Round Track	Oil Rubbed Bronze	1	11.0 lbs. [4.9 kg.]	1	11.0 lbs. [4.9 kg.]
RTSN-06	6' Round Track	Satin Nickel	1	11.0 lbs. [4.9 kg.]	5	55.0 lbs. [24.9 kg.]
RTSN-06-A	6' Round Track	Satin Nickel	1	11.0 lbs. [4.9 kg.]	1	11.0 lbs. [4.9 kg.]
RTBK-08	8' Round Track	Black	1	12.0 lbs. [5.4 kg.]	5	60.0 lbs. [27.2 kg.]
RTBK-08-A	8' Round Track	Black	1	12.0 lbs. [5.4 kg.]	1	12.0 lbs. [5.4 kg.]
RTBZ-08	8' Round Track	Oil Rubbed Bronze	1	12.0 lbs. [5.4 kg.]	5	60.0 lbs. [27.2 kg.]
RTBZ-08-A	8' Round Track	Oil Rubbed Bronze	1	12.0 lbs. [5.4 kg.]	1	12.0 lbs. [5.4 kg.]
RTSN-08	8' Round Track	Satin Nickel	1	12.0 lbs. [5.4 kg.]	5	60.0 lbs. [27.2 kg.]
RTSN-08-A	8' Round Track	Satin Nickel	1	12.0 lbs. [5.4 kg.]	1	12.0 lbs. [5.4 kg.]
Aluminum Round Track Component Hardware Kits (Tracks Sold Separately)						
RT-SPBK-06	Santiago Short Bracket	Black	1	4.50 lbs. [2.0 kg.]	5	23.5 lbs. [10.6 kg.]
RT-SPBZ-06	Santiago Short Bracket	Oil Rubbed Bronze	1	4.50 lbs. [2.0 kg.]	5	23.5 lbs. [10.6 kg.]
RT-FDBK-06	Barcelona Short Bracket	Black	1	4.50 lbs. [2.0 kg.]	5	23.5 lbs. [10.6 kg.]
RT-FDBZ-06	Barcelona Short Bracket	Oil Rubbed Bronze	1	4.50 lbs. [2.0 kg.]	5	23.5 lbs. [10.6 kg.]
RT-HSBK-06	Rushmore Short Bracket	Black	1	4.50 lbs. [2.0 kg.]	5	23.5 lbs. [10.6 kg.]
RT-HSBZ-06	Rushmore Short Bracket	Oil Rubbed Bronze	1	4.50 lbs. [2.0 kg.]	5	23.5 lbs. [10.6 kg.]
RT-HSSN-06	Rushmore Short Bracket	Satin Nickel	1	4.50 lbs. [2.0 kg.]	5	23.5 lbs. [10.6 kg.]
RT-VSBK-06	Venice Short Bracket	Black	1	4.50 lbs. [2.0 kg.]	5	23.5 lbs. [10.6 kg.]
RT-VSBZ-06	Venice Short Bracket	Oil Rubbed Bronze	1	4.50 lbs. [2.0 kg.]	5	23.5 lbs. [10.6 kg.]
RT-VSSN-06	Venice Short Bracket	Satin Nickel	1	4.50 lbs. [2.0 kg.]	5	23.5 lbs. [10.6 kg.]
RT-TMBK-06	Monte Carlo Short Bracket	Black	1	4.50 lbs. [2.0 kg.]	5	23.5 lbs. [10.6 kg.]
RT-TMBZ-06	Monte Carlo Short Bracket	Oil Rubbed Bronze	1	4.50 lbs. [2.0 kg.]	5	23.5 lbs. [10.6 kg.]
RT-TMSN-06	Monte Carlo Short Bracket	Satin Nickel	1	4.50 lbs. [2.0 kg.]	5	23.5 lbs. [10.6 kg.]
RT-TSBK-06	Atlantis Short Bracket	Black	1	4.50 lbs. [2.0 kg.]	5	23.5 lbs. [10.6 kg.]
RT-TSBZ-06	Atlantis Short Bracket	Oil Rubbed Bronze	1	4.50 lbs. [2.0 kg.]	5	23.5 lbs. [10.6 kg.]
RT-TSSN-06	Atlantis Short Bracket	Satin Nickel	1	4.50 lbs. [2.0 kg.]	5	23.5 lbs. [10.6 kg.]
RT-STBK-06	Macau Short Bracket	Black	1	4.50 lbs. [2.0 kg.]	5	23.5 lbs. [10.6 kg.]
RT-STBZ-06	Macau Short Bracket	Oil Rubbed Bronze	1	4.50 lbs. [2.0 kg.]	5	23.5 lbs. [10.6 kg.]
RT-STSN-06	Macau Short Bracket	Satin Nickel	1	4.50 lbs. [2.0 kg.]	5	23.5 lbs. [10.6 kg.]
RT-HKBK-06	Salzburg Hardware Short Bracket	Black	1	4.50 lbs. [2.0 kg.]	5	23.5 lbs. [10.6 kg.]
RT-HKBZ-06	Salzburg Hardware Short Bracket	Oil Rubbed Bronze	1	4.50 lbs. [2.0 kg.]	5	23.5 lbs. [10.6 kg.]
RT-HKSN-06	Salzburg Hardware Short Bracket	Satin Nickel	1	4.50 lbs. [2.0 kg.]	5	23.5 lbs. [10.6 kg.]

Aluminum Round Track Accessories



RT-BPSBZ
Bi-part Stop
Shown in Oil Rubbed Bronze
Also available in Black and
Satin Nickel



RT-ESBZ
End Stop
Shown in Oil Rubbed Bronze
Also available in Black and
Satin Nickel



Rushmore Series Products Shown:
(2) RT-HSBK-06 - Hardware Kit
(2) RTBK-06 - Black Round Track
(1) RT-SPK Splice Kit



RT-AGSP-BZ
Santiago Series
Shown in Oil Rubbed Bronze
Also available in Black



RT-AGFD-BZ
Barcelona Series
Shown in Oil Rubbed Bronze
Also available in Black



RT-AGD-BZ
Domed Series
Shown in Oil Rubbed Bronze
Also available in Black and
Satin Nickel



RT-SS-LBZ
Santiago Series
Left Stop
Shown in Oil Rubbed Bronze
Also available in Black



RT-SS-RBZ
Santiago Series
Right Stop
Shown in Oil Rubbed Bronze
Also available in Black



RT-SF-LBZ
Barcelona Series
Left Stop
Shown in Oil Rubbed Bronze
Also available in Black



RT-SF-RBZ
Barcelona Series
Right Stop
Shown in Oil Rubbed Bronze
Also available in Black



RT-SD-NBZ
Domed Non-Handed Stop
Shown in Oil Rubbed Bronze
Also available in Black and
Satin Nickel



RT-STK-BZ
Stop Kit
Shown in Oil Rubbed Bronze
Also available in Black and
Satin Nickel



BD-FGP
Adjustable Door Guide,
Plastic Wheel
Fits 3/4" to 2-1/2" thick doors



BD-FGM
Adjustable Door Guide,
Metal Wheel
Fits 1" to 2-3/4" thick doors

Part Number	Description	Finish	Unit Pack		Master Carton	
			Qty	Weight	Qty	Weight
Bi-part Stops						
RT-BPSBK	Bi-part Stop	Black	1	0.10 lbs. [0.04 kg.]	5	0.50 lbs. [0.22 kg.]
RT-BPSBZ	Bi-part Stop	Oil Rubbed Bronze	1	0.10 lbs. [0.04 kg.]	5	0.50 lbs. [0.22 kg.]
RT-BPSSN	Bi-part Stop	Satin Nickel	1	0.10 lbs. [0.04 kg.]	5	0.50 lbs. [0.22 kg.]
End Stop Kits						
RT-ESBK	End Stop	Black	1	0.30 lbs. [0.13 kg.]	5	1.50 lbs. [0.68 kg.]
RT-ESBZ	End Stop	Oil Rubbed Bronze	1	0.30 lbs. [0.13 kg.]	5	1.50 lbs. [0.68 kg.]
RT-ESSN	End Stop	Satin Nickel	1	0.30 lbs. [0.13 kg.]	5	1.50 lbs. [0.68 kg.]
Adjustable Center Guide Kits						
RT-AGSP-BK	Santiago Adjustable Center Guide	Black	1	0.50 lbs. [0.22 kg.]	5	2.50 lbs. [1.13 kg.]
RT-AGSP-BZ	Santiago Adjustable Center Guide	Oil Rubbed Bronze	1	0.50 lbs. [0.22 kg.]	5	2.50 lbs. [1.13 kg.]
RT-AGFD-BK	Barcelona Adjustable Center Guide	Black	1	0.50 lbs. [0.22 kg.]	5	2.50 lbs. [1.13 kg.]
RT-AGFD-BZ	Barcelona Adjustable Center Guide	Oil Rubbed Bronze	1	0.50 lbs. [0.22 kg.]	5	2.50 lbs. [1.13 kg.]
RT-AGD-BK	Domed Adjustable Center Guide	Black	1	0.50 lbs. [0.22 kg.]	5	2.50 lbs. [1.13 kg.]
RT-AGD-BZ	Domed Adjustable Center Guide	Oil Rubbed Bronze	1	0.50 lbs. [0.22 kg.]	5	2.50 lbs. [1.13 kg.]
RT-AGD-SN	Domed Adjustable Center Guide	Satin Nickel	1	0.50 lbs. [0.22 kg.]	5	2.50 lbs. [1.13 kg.]
Stop Kits						
RT-SS-LBK	Santiago Left Stop	Black	1	0.40 lbs. [0.18 kg.]	10	4.00 lbs. [1.81 kg.]
RT-SS-LBZ	Santiago Left Stop	Oil Rubbed Bronze	1	0.40 lbs. [0.18 kg.]	10	4.00 lbs. [1.81 kg.]
RT-SS-RBK	Santiago Right Stop	Black	1	0.40 lbs. [0.18 kg.]	10	4.00 lbs. [1.81 kg.]
RT-SS-RBZ	Santiago Right Stop	Oil Rubbed Bronze	1	0.40 lbs. [0.18 kg.]	10	4.00 lbs. [1.81 kg.]
RT-SF-LBK	Barcelona Left Stop	Black	1	0.40 lbs. [0.18 kg.]	10	4.00 lbs. [1.81 kg.]
RT-SF-LBZ	Barcelona Left Stop	Oil Rubbed Bronze	1	0.40 lbs. [0.18 kg.]	10	4.00 lbs. [1.81 kg.]
RT-SF-RBK	Barcelona Right Stop	Black	1	0.40 lbs. [0.18 kg.]	10	4.00 lbs. [1.81 kg.]
RT-SF-RBZ	Barcelona Right Stop	Oil Rubbed Bronze	1	0.40 lbs. [0.18 kg.]	10	4.00 lbs. [1.81 kg.]
RT-SD-NBK	Domed Non-Handed Stop	Black	1	0.20 lbs. [0.09 kg.]	10	4.00 lbs. [1.81 kg.]
RT-SD-NBZ	Domed Non-Handed Stop	Oil Rubbed Bronze	1	0.20 lbs. [0.09 kg.]	10	4.00 lbs. [1.81 kg.]
RT-SD-NSN	Domed Non-Handed Stop	Satin Nickel	1	0.20 lbs. [0.09 kg.]	10	4.00 lbs. [1.81 kg.]
RT-STK-BK	Stop Kit	Black	1	0.10 lbs. [0.04 kg.]	5	0.50 lbs. [0.22 kg.]
RT-STK-BZ	Stop Kit	Oil Rubbed Bronze	1	0.10 lbs. [0.04 kg.]	5	0.50 lbs. [0.22 kg.]
RT-STK-SN	Stop Kit	Satin Nickel	1	0.10 lbs. [0.04 kg.]	5	0.50 lbs. [0.22 kg.]
Door Guides						
BD-FGP	Adjustable Door Guide for 3/4"—2-1/2" Doors, Plastic Wheel	Black	1	0.50 lbs. [0.2 kg.]	1	0.50 lbs. [0.2 kg.]
BD-FGM	Adjustable Door Guide for 1"—2-3/4" Doors, Metal Wheel	Black	1	1.2 lbs. [0.5 kg.]	1	1.2 lbs. [0.5 kg.]

Aluminum Round Track Accessories



RT-UGS-BK
Shown in Black
Also available in Oil Rubbed Bronze
and Satin Nickel



RT-UGL-BZ
Shown in Oil Rubbed Bronze
Also available in Black and
Satin Nickel



RT-WML-BK
Shown in Black
Also available in Oil Rubbed Bronze
and Satin Nickel



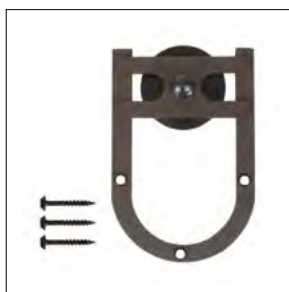
RT-WMS-BK
Shown in Black
Also available in Oil Rubbed Bronze
and Satin Nickel



RT-CSD-BZ
Santiago Series
Shown in Oil Rubbed Bronze
Also available in Black



RT-CFD-BZ
Barcelona Series
Shown in Oil Rubbed Bronze
Also available in Black



RT-CHS-BZ
Rushmore Series
Shown in Oil Rubbed Bronze
Also available in Black and
Satin Nickel



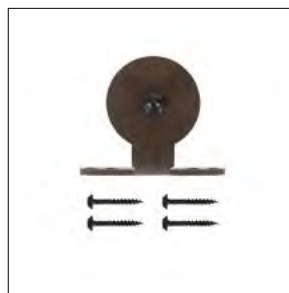
RT-CHK-BZ
Salzburg Series
Shown in Oil Rubbed Bronze
Also available in Black and
Satin Nickel



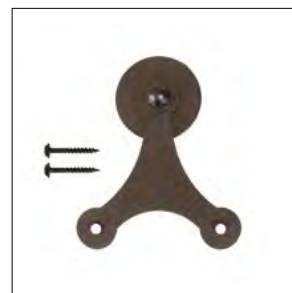
RT-CST-BZ
Macau Series
Shown in Oil Rubbed Bronze
Also available in Black and
Satin Nickel



RT-CVS-BZ
Venice Series
Shown in Oil Rubbed Bronze
Also available in Black and
Satin Nickel



RT-CTM-BZ
Monte Carlo Series
Shown in Oil Rubbed Bronze
Also available in Black and
Satin Nickel



RT-CTS-BZ
Atlantis Series
Shown in Oil Rubbed Bronze
Also available in Black and
Satin Nickel



RT-SPK
Splice Kit

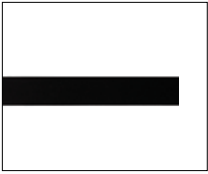


RT-TES
Tap for Rail/End Stop

Part Number	Description	Finish	Unit Pack		Master Carton	
			Qty	Weight	Qty	Weight
Universal Guides						
RT-UGS-BK	Use with short bracket 1-7/8"	Black	1	0.20 lbs. [0.09 kg.]	10	2.00 lbs. [0.90 kg.]
RT-UGS-BZ	Use with short bracket 1-7/8"	Oil Rubbed Bronze	1	0.20 lbs. [0.09 kg.]	10	2.00 lbs. [0.90 kg.]
RT-UGS-SN	Use with short bracket 1-7/8"	Satin Nickel	1	0.20 lbs. [0.09 kg.]	10	2.00 lbs. [0.90 kg.]
RT-UGL-BK	Use with long brackets 2-1/2"	Oil Rubbed Bronze	1	0.20 lbs. [0.09 kg.]	10	2.00 lbs. [0.90 kg.]
RT-UGL-BZ	Use with long brackets 2-1/2"	Black	1	0.20 lbs. [0.09 kg.]	10	2.00 lbs. [0.90 kg.]
RT-UGL-SN	Use with long brackets 2-1/2"	Satin Nickel	1	0.20 lbs. [0.09 kg.]	10	2.00 lbs. [0.90 kg.]
Wall Mounted Brackets						
RT-WML-BK	Long Bracket	Black	1	0.10 lbs. [0.04 kg]	25	2.50 lbs. [1.13 kg.]
RT-WML-BZ	Long Bracket	Oil Rubbed Bronze	1	0.10 lbs. [0.04 kg]	25	2.50 lbs. [1.13 kg.]
RT-WML-SN	Long Bracket	Satin Nickel	1	0.10 lbs. [0.04 kg]	25	2.50 lbs. [1.13 kg.]
RT-WMS-BK	Short Bracket	Black	1	0.10 lbs. [0.04 kg]	25	2.50 lbs. [1.13 kg.]
RT-WMS-BZ	Short Bracket	Oil Rubbed Bronze	1	0.10 lbs. [0.04 kg]	25	2.50 lbs. [1.13 kg.]
RT-WMS-SN	Short Bracket	Satin Nickel	1	0.10 lbs. [0.04 kg]	25	2.50 lbs. [1.13 kg.]
Round Track Carriers						
RT-CSD-BK	Santiago	Black	1	1.20 lbs. [0.54 kg.]	10	10.0 lbs. [4.53 kg.]
RT-CSD-BZ	Santiago	Oil Rubbed Bronze	1	1.20 lbs. [0.54 kg.]	10	10.0 lbs. [4.53 kg.]
RT-CFD-BK	Barcelona	Black	1	1.20 lbs. [0.54 kg.]	10	10.0 lbs. [4.53 kg.]
RT-CFD-BZ	Barcelona	Oil Rubbed Bronze	1	1.20 lbs. [0.54 kg.]	10	10.0 lbs. [4.53 kg.]
RT-CHS-BK	Rushmore	Black	1	1.00 lbs. [0.45 kg.]	10	10.0 lbs. [4.53 kg.]
RT-CHS-BZ	Rushmore	Oil Rubbed Bronze	1	1.00 lbs. [0.45 kg.]	10	10.0 lbs. [4.53 kg.]
RT-CHS-SN	Rushmore	Satin Nickel	1	1.00 lbs. [0.45 kg.]	10	10.0 lbs. [4.53 kg.]
RT-CHK-BK	Salzburg	Black	1	0.90 lbs. [0.40 kg.]	10	9.0 lbs. [4.08 kg.]
RT-CHK-BZ	Salzburg	Oil Rubbed Bronze	1	0.90 lbs. [0.40 kg.]	10	9.0 lbs. [4.08 kg.]
RT-CHK-SN	Salzburg	Satin Nickel	1	0.90 lbs. [0.40 kg.]	10	9.0 lbs. [4.08 kg.]
RT-CST-BK	Macau	Black	1	1.00 lbs. [0.45 kg.]	10	10.0 lbs. [4.53 kg.]
RT-CST-BZ	Macau	Oil Rubbed Bronze	1	1.00 lbs. [0.45 kg.]	10	10.0 lbs. [4.53 kg.]
RT-CST-SN	Macau	Satin Nickel	1	1.00 lbs. [0.45 kg.]	10	10.0 lbs. [4.53 kg.]
RT-CVS-BK	Venice	Black	1	1.00 lbs. [0.45 kg.]	10	10.0 lbs. [4.53 kg.]
RT-CVS-BZ	Venice	Oil Rubbed Bronze	1	1.00 lbs. [0.45 kg.]	10	10.0 lbs. [4.53 kg.]
RT-CVS-SN	Venice	Satin Nickel	1	1.00 lbs. [0.45 kg.]	10	10.0 lbs. [4.53 kg.]
RT-CTM-BK	Monte Carlo	Black	1	1.00 lbs. [0.45 kg.]	10	10.0 lbs. [4.53 kg.]
RT-CTM-BZ	Monte Carlo	Oil Rubbed Bronze	1	1.00 lbs. [0.45 kg.]	10	10.0 lbs. [4.53 kg.]
RT-CTM-SN	Monte Carlo	Satin Nickel	1	1.00 lbs. [0.45 kg.]	10	10.0 lbs. [4.53 kg.]
RT-CTS-BK	Atlantis	Black	1	1.00 lbs. [0.45 kg.]	10	10.0 lbs. [4.53 kg.]
RT-CTS-BZ	Atlantis	Oil Rubbed Bronze	1	1.00 lbs. [0.45 kg.]	10	10.0 lbs. [4.53 kg.]
RT-CTS-SN	Atlantis	Satin Nickel	1	1.00 lbs. [0.45 kg.]	10	10.0 lbs. [4.53 kg.]
Round Track Accessories						
RT-SPK	Splice Kit	N/A	1	0.10 lbs. [0.04 kg.]	5	0.50 lbs. [0.22 kg.]
RT-TES	Tap for Rail/End Stop	N/A	1	0.10 lbs. [0.04 kg.]	5	0.50 lbs. [0.22 kg.]

Aluminum Flat Rail Kits and Accessories

Flat Rail



FR-BK-04

How to Order

Track is ordered separately from hardware kit.

Single Door Solution:

- 1) Track: Specify finish and length. Example: Part number FR-BK-06-A, black finish, 6' length.
- 2) Carrier Hardware Kit: Specify style and finish. Example: Part number FR-HK-05, 5" hook carrier style, black finish.

Bi-Part Door Solution:

If using two doors that are 3' wide, order a 6' track per door, for a total of 12'. This allows the doors to clear the door opening when in the open position. Order one carrier hardware kit per door and one splice kit.

To Order:

- 1) Track: Specify quantity, finish and length. Example: Order 2 of part number FR-BK-06-A, black finish, 6' length each.
- 2) Carrier Hardware Kit: Specify quantity, style and finish. Example: Order 2 of part number FR-HK-05, 5" hook carrier style, black finish.
- 3) Splice Kit: Order 1 of part number FR-SPK flat rail splice kit.

Kits Include:

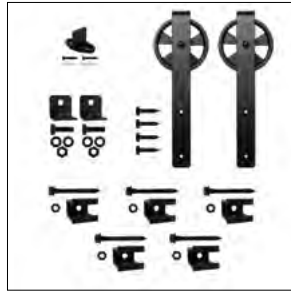
(Rail sold separately)

- Carriers (2)
- Floor Guide Set (1)
- Brackets (5)
- Stop Kit (1)
- Fasteners

Flat Rail Kits (rail sold separately)



FR-HK-08
3" Hook Carriers



FR-HK-05
5" Hook Carriers



FR-ST-03
3" Strap Carriers



FR-TM-03
3" Top Mount Carriers

Carriers



FRC-HK3-08
3" Hook Carrier



FRC-HK5-08
5" Hook Carrier



FRC-ST3-08
3" Strap Carrier



FRC-TM3-08
3" Top Mount Carrier

Flat Rail Accessories



FR-BKK
Bracket Kit



FR-STK
Stop Kit



FR-SPK
Splice Kit



FR-DBK
Drill Bit

Aluminum Flat Rail Kits and Accessories

Flat Rail Accessories



BD-FGP
Adjustable Door Guide,
Plastic Wheel
Fits 3/4" to 2-1/2" thick doors



BD-FGM
Adjustable Door Guide,
Metal Wheel
Fits 1" to 2-3/4" thick doors

Part Number	Description	Finish	Unit Pack		Master Carton	
			Qty	Weight	Qty	Weight
Flat Rails						
FR-BK-04	4' Flat Rail	Black	1	6.00 lbs. [2.72 kg.]	5	24.00 lbs. [10.88 kg.]
FR-BK-04-A	4' Flat Rail	Black	1	6.00 lbs. [2.72 kg.]	1	6.00 lbs. [2.72 kg.]
FR-BK-06	6' Flat Rail	Black	1	9.00 lbs. [4.08 kg.]	5	45.00 lbs. [20.4 kg.]
FR-BK-06-A	6' Flat Rail	Black	1	9.00 lbs. [4.08 kg.]	1	9.00 lbs. [4.08 kg.]
FR-BK-08	8' Flat Rail	Black	1	11.00 lbs. [4.98 kg.]	5	55.00 lbs. [24.9 kg.]
FR-BK-08-A	8' Flat Rail	Black	1	11.00 lbs. [4.98 kg.]	1	11.00 lbs. [4.98 kg.]
Flat Rail Hardware Kits						
FR-HK-08	3" Hook Carriers	Black	1	4.40 lbs. [1.99 kg.]	5	22.00 lbs. [9.97 kg.]
FR-HK-05	5" Hook Carriers	Black	1	6.30 lbs. [2.85 kg.]	5	31.50 lbs. [14.2 kg.]
FR-ST-03	3" Strap Carriers	Black	1	4.40 lbs. [1.99 kg.]	5	22.00 lbs. [9.97 kg.]
FR-TM-03	3" Top Mount Carriers	Black	1	4.40 lbs. [1.99 kg.]	5	22.00 lbs. [9.97 kg.]
Flat Rail Accessories						
FR-BKK	Bracket Kit	Black	1	0.20 lbs. [0.09 kg.]	10	2.00 lbs. [0.90 kg.]
FR-STK	Stop Kit	Black	1	0.30 lbs. [0.13 kg.]	10	3.00 lbs. [1.36 kg.]
FR-SPK	Splice Kit	Black	1	0.10 lbs. [0.04 kg.]	10	1.00 lbs. [0.45 kg.]
FR-DBK	Drill Bit	N/A	1	0.10 lbs. [0.04 kg.]	10	1.00 lbs. [0.45 kg.]
Carriers/Straps						
FRC-HK3-08	3" Hook Carrier	Black	1	1.60 lbs. [0.72 kg.]	10	16.00 lbs. [7.25 kg.]
FRC-HK5-08	5" Hook Carrier	Black	1	2.60 lbs. [1.17 kg.]	10	26.00 lbs. [11.7 kg.]
FRC-ST3-08	3" Strap Carrier	Black	1	1.60 lbs. [0.72 kg.]	10	16.00 lbs. [7.25 kg.]
FRC-TM3-08	3" Top Mount Carrier	Black	1	1.60 lbs. [0.72 kg.]	10	16.00 lbs. [7.25 kg.]
Door Guides						
BD-FGP	Adjustable Door Guide for 3/4"—2-1/2" Doors, Plastic Wheel	Black	1	0.50 lbs. [0.2 kg.]	1	0.50 lbs. [0.2 kg.]
BD-FGM	Adjustable Door Guide for 1"—2-3/4" Doors, Metal Wheel	Black	1	1.2 lbs. [0.5 kg.]	1	1.2 lbs. [0.5 kg.]



FR-BZHK-72
Flat Rail
Face Mount

Steel Flat Rail Kits and Accessories

Smart, upmarket styles for commercial properties from hotels to offices to warehouses

- Designs from rustic to contemporary for a range of commercial applications
- Reliable, durable for use in high-traffic spaces
- Effortless movement of wood doors up to 250 lbs
- Rail is pre-drilled for mounting, coupling and soft-close add on
- Bypass bracket is available for by pass door installation
- Available in 72" and 96" lengths

Steel Flat Rail Kits and Accessories

Flat Rail Kits include:

- Pre-drilled Rail 72" or 96" (1)
- Carriers (2)
- Mounting Clamps (5)
- End stops (2)
- Anti-Jump Bumpers (2)
- Floor Guide Set (1)
- Fasteners and Allen Wrench



Carrier shown to represent kit contents, styles shown below

FR-BZTM

Face Mount style

- Wood application only
- 250 lb. Capacity



FR-BZHK / FR-BHK / FR-WTHK
Shown in Oil Rubbed Bronze
Also available in Black or White

Top Mount style

- Wood application only
- 250 lb. Capacity



FR-BTM / FR-BZTM
Shown in Oil Rubbed Bronze
Also available in Black

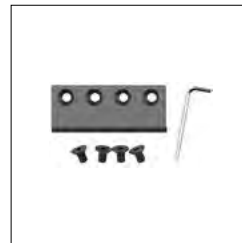
Flat Rail and Accessories



FR-BZ-96 / FR-BZ-96
Shown in Oil Rubbed Bronze
Also available in Black
Mounting brackets included



FR-BYP
Bypass Bracket
Shown in Black
Also available in Oil Rubbed Bronze



FR-C
Connector
Shown in Black
Also available in Oil Rubbed Bronze



FRSC-A0
Soft-Close Add On
Black finish



BD-FGP
Adjustable Door Guide,
Plastic Wheel
Fits 3/4" to 2-1/2" thick doors



BD-FGM
Adjustable Door Guide,
Metal Wheel
Fits 1" to 2-3/4" thick doors

Part Number	Description	Finish	Unit Pack		Master Carton	
			Qty	Weight	Qty	Weight
Steel Flat Rail Complete Kit						
Face Mount style						
FR-BHK-72	72" Flat Rail Hook	Black	1	17.0 lbs. [7.7 kg.]	1	17.0 lbs. [7.7 kg.]
FR-BHK-96	96" Flat Rail Hook	Black	1	20.0 lbs. [9.1 kg.]	1	20.0 lbs. [9.1 kg.]
FR-BZHK-72	72" Flat Rail Hook	Oil Rubbed Bronze	1	17.0 lbs. [7.7 kg.]	1	17.0 lbs. [7.7 kg.]
FR-BZHK-96	96" Flat Rail Hook	Oil Rubbed Bronze	1	20.0 lbs. [9.1 kg.]	1	20.0 lbs. [9.1 kg.]
FR-WTHK-72	72" Flat Rail Hook	White	1	17.0 lbs. [7.7 kg.]	1	17.0 lbs. [7.7 kg.]
Top Mount style						
FR-BTM-72	72" Flat Rail Top Mount	Black	1	17.0 lbs. [7.7 kg.]	1	17.0 lbs. [7.7 kg.]
FR-BTM-96	96" Flat Rail Top Mount	Black	1	20.0 lbs. [9.1 kg.]	1	20.0 lbs. [9.1 kg.]
FR-BZTM-72	72" Flat Rail Top Mount	Oil Rubbed Bronze	1	17.0 lbs. [7.7 kg.]	1	17.0 lbs. [7.7 kg.]
FR-BZTM-96	96" Flat Rail Top Mount	Oil Rubbed Bronze	1	20.0 lbs. [9.1 kg.]	1	20.0 lbs. [9.1 kg.]
Steel Flat Rail (pre-drilled for mounting, coupling and soft-close add on)						
FR-BK-72	72" Flat Rail with 5 Mounting Brackets	Black	1	2.2 lbs. [1.0 kg.]	5	11.0 lbs. [5.0 kg.]
FR-BK-96	96" Flat Rail with 6 Mounting Brackets	Black	1	2.6 lbs. [1.2 kg.]	5	13.0 lbs. [6.0 kg.]
FR-BZ-72	72" Flat Rail with 5 Mounting Brackets	Oil Rubbed Bronze	1	2.6 lbs. [1.2 kg.]	5	13.0 lbs. [6.0 kg.]
FR-BZ-96	96" Flat Rail with 6 Mounting Brackets	Oil Rubbed Bronze	1	2.2 lbs. [1.0 kg.]	5	11.0 lbs. [5.0 kg.]
Steel Flat Rail Accessories						
FR-BYP-B	Flat Rail Bypass Bracket	Black	1	1.0 lbs. [0.5 kg.]	10	1.0 lbs. [0.5 kg.]
FR-BYP-ORB	Flat Rail Bypass Bracket	Oil Rubbed Bronze	1	1.0 lbs. [0.5 kg.]	10	1.0 lbs. [0.5 kg.]
FR-C-BK	Flat Rail Connector	Black	1	0.2 lbs. [0.1 kg.]	10	0.2 lbs. [0.1 kg.]
FR-C-BZ	Flat Rail Connector	Oil Rubbed Bronze	1	0.2 lbs. [0.1 kg.]	10	0.2 lbs. [0.1 kg.]
FRSC-AO	Flat Rail Soft-Close Add On	Black	1	1.1 lbs. [0.4 kg.]	1	1.1 lbs. [0.4 kg.]
BD-FGP	Adjustable Door Guide for 3/4"—2-1/2" Doors, Plastic Wheel	Black	1	0.50 lbs. [0.2 kg.]	1	0.50 lbs. [0.2 kg.]
BD-FGM	Adjustable Door Guide for 1"—2-3/4" Doors, Metal Wheel	Black	1	1.2 lbs. [0.5 kg.]	1	1.2 lbs. [0.5 kg.]



FRM-FM6B
Flat Rail
Face Mount



FRM-TM6B
Flat Rail
Top Mount



Mini Flat Rail

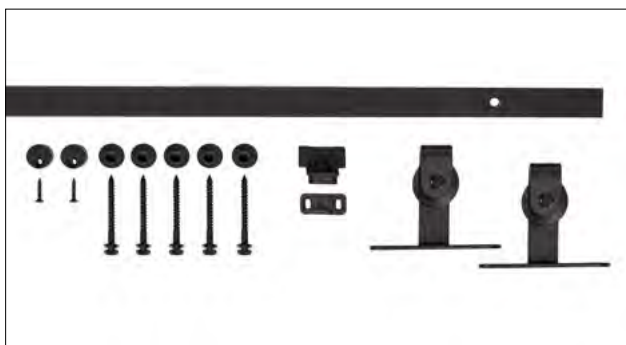
Barn Door hardware in miniature for that rustic feel in applications around the home, from vanities to kitchen islands, dressers, TV stands and window coverings.

- Choose top mount or face mount carriers
- Powder coated steel rail and components with black matte finish
- Predrilled rail for convenience
- Complete easy-to-install kits include 5'9" rail, carriers, stops, floor guide and all fasteners
- Supports doors up to 44 lbs.
- Suitable for door thicknesses of 1" – 1-3/16"
- Order two carrier kits for two door applications

Mini Flat Rail

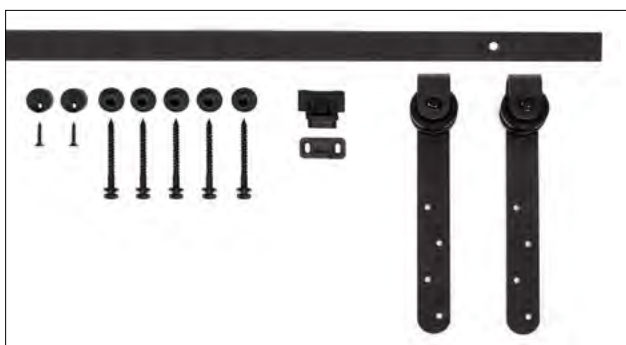
Complete Kits include:

- Predrilled Rail 5'9" (1)
- Carriers (2)
- Mounting Clamps (2)
- End stops (2)
- Floor guide (1)
- Anti-Jump Bumpers (2)
- Fasteners and Allen Wrench



Complete kit: FRM-TM6B
Carrier only: FRM-CTM

Complete Kit shown. Carrier also sold separately.



Complete kit: FRM-FM6B
Carrier only: FRM-CFM

Complete Kit shown. Carrier also sold separately.

Mini Flat Rail Carriers

- Single door application
- Wood doors only
- Fasteners included
- Order two carrier kits for two door applications



FRM-CFM
Face Mount
Black finish



FRM-CTM
Top Mount
Black finish

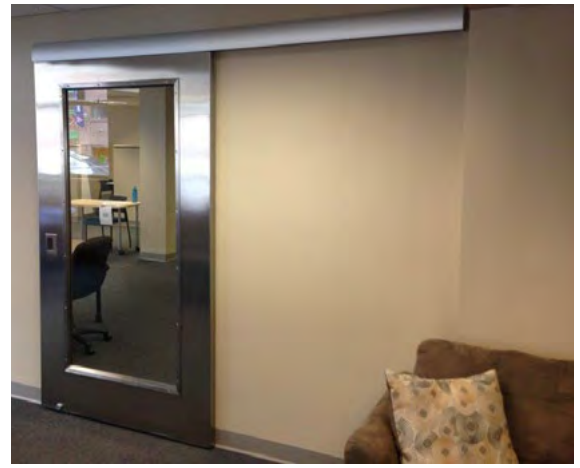
Soft-Close Add On

- Add On Kit includes 2 units for Mini Flat Rail Kits
- Fasteners included



FRM-SC
Gray finish

Part Number	Description	Finish	Unit Pack		Master Carton	
			Qty	Weight	Qty	Weight
Mini Flat Rail Complete Kits						
Face Mount style						
FRM-FM6B	5' 9" Mini Face Mount Kit	Black	1	5.5 lbs. [2.5 kg.]	1	5.5 lbs. [2.5 kg.]
Top Mount style						
FRM-TM6B	5' 9" Mini Top Mount Kit	Black	1	5.5 lbs. [2.5 kg.]	1	5.5 lbs. [2.5 kg.]
Mini Flat Rail Carriers						
Face Mount style						
FRM-CFM	Mini Face Mount Carrier 2 pack	Black	2	2.1 lbs. [1.0 kg.]	1	2.1 lbs. [1.0 kg.]
Top Mount style						
FRM-CTM	Mini Top Mount Carrier 2 pack	Black	2	2.1 lbs. [1.0 kg.]	1	2.1 lbs. [1.0 kg.]
Mini Flat Rail Accessories						
FRM-SC	Mini Soft-Close Add On Kit	Gray	2	1.5 lbs. [0.7 kg.]	1	1.5 lbs. [0.7 kg.]



Commercial Installation of Metro Wall-Mounted Sliding Door Hardware
Shown in Clear Etched Aluminum



Etched
Aluminum
Clear



Etched
Aluminum
Dark Bronze

Metro Aluminum Wall-Mounted Hardware

Architecturally focused design gives a clean, finished look to any interior doorway or division within a room

- KV proprietary design featuring low-profile fascia and track with concealing end caps for a finished look
- Complete kits include track, fascia, quiet 4-wheel ball-bearing carrier and all hardware
- Etched aluminum finish in clear or dark bronze
- Supports doors up to 250 lbs.
- Available in 48", 60", 72", 96" and 144" lengths

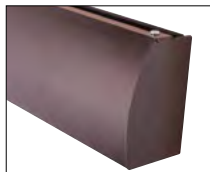
Metro Aluminum Wall-Mounted System

Packaged Sets Include:

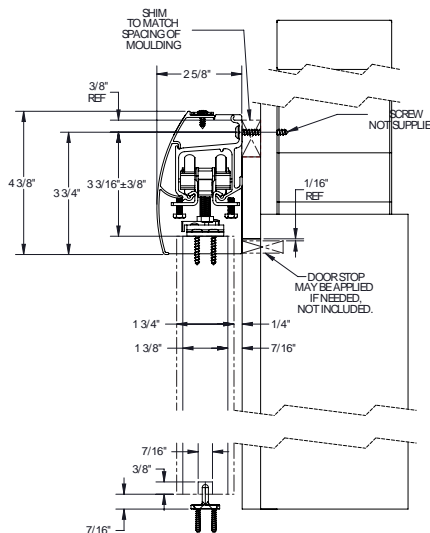
- Track
- Fascia
- End caps
- Parts bag



WM-M250A-A
Clear



WM-M250A-B
Dark Bronze



Door thickness:

1" to 1-3/4"

Load rating:

Up to 250 lbs.

Track material:

Single aluminum box track

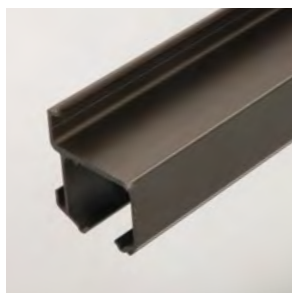
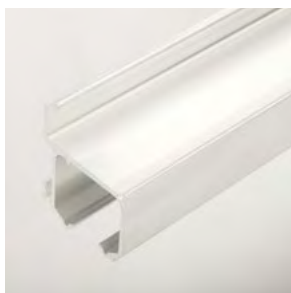
Carrier:

4-wheel ball-bearing

Conforms to:

ANSI BHMA A156.14-2007
Grade 1 D8011, D8681, D8691
Grade 2 D8012, D8692
Bi-parting Grade 1 D8711
Grade 2 D8721

Wall-Mount Tracks in Clear or Dark Bronze



Fascia in Clear or Dark Bronze



End Caps Clear or Dark Bronze



Parts Bag



Ease of Installation



1. Install wall-mount track



2. Mount door to track and
secure end caps to fascia



3. Snap fascia onto
wall-mount track

Part Number	Description	Finish	Unit Pack	
			Qty	Weight
Packaged Sets				
WM-M250A-A-4	48" Mill Finished Track, Fascia, End Caps, Parts Bag for 1 X 24" Door	Clear	1	10.0 lbs. [4.5 kg.]
WM-M250A-A-5	60" Mill Finished Track, Fascia, End Caps, Parts Bag for 1 X 30" Door	Clear	1	12.0 lbs. [5.4 kg.]
WM-M250A-A-6	72" Mill Finished Track, Fascia, End Caps, Parts Bag for 1 X 36" Door	Clear	1	14.0 lbs. [6.3 kg.]
WM-M250A-A-8	96" Mill Finished Track, Fascia, End Caps, Parts Bag for 1 X 48" Door	Clear	1	18.0 lbs. [8.2 kg.]
WM-M250A-A-12*	144" Mill Finished Track, Fascia, End Caps, Parts Bag for 2 X 36" Doors	Clear	1	22.0 lbs. [9.9 kg.]
WM-M250A-B-4	48" Anodized Track, Fascia, End Caps, Parts Bag for 1 X 24" Door	Dark Bronze	1	10.0 lbs. [4.5 kg.]
WM-M250A-B-5	60" Anodized Track, Fascia, End Caps, Parts Bag for 1 X 30" Door	Dark Bronze	1	12.0 lbs. [5.4 kg.]
WM-M250A-B-6	72" Anodized Track, Fascia, End Caps, Parts Bag for 1 X 36" Door	Dark Bronze	1	14.0 lbs. [6.3 kg.]
WM-M250A-B-8	96" Anodized Track, Fascia, End Caps, Parts Bag for 1 X 48" Door	Dark Bronze	1	18.0 lbs. [8.2 kg.]
WM-M250A-B-12*	144" Anodized Track, Fascia, End Caps, Parts Bag for 2 X 36" Doors	Dark Bronze	1	22.0 lbs. [9.9 kg.]
Tracks				
BK-WMT-A-48	48" Mill Finish Aluminum Wall-Mount	Clear	5	18.0 lbs. [8.2 kg.]
BK-WMT-A-60	60" Mill Finish Aluminum Wall-Mount	Clear	5	23.0 lbs. [10.4 kg.]
BK-WMT-A-72	72" Mill Finish Aluminum Wall-Mount	Clear	5	26.0 lbs. [11.7 kg.]
BK-WMT-A-96	96" Mill Finish Aluminum Wall-Mount	Clear	5	35.0 lbs. [15.8 kg.]
BK-WMT-A-144	144" Mill Finish Aluminum Wall-Mount	Clear	5	53.0 lbs. [24.0 kg.]
BK-WMT-B-48	48" Anodized Aluminum Wall-Mount	Dark Bronze	5	18.0 lbs. [8.2 kg.]
BK-WMT-B-60	60" Anodized Aluminum Wall-Mount	Dark Bronze	5	23.0 lbs. [10.4 kg.]
BK-WMT-B-72	72" Anodized Aluminum Wall-Mount	Dark Bronze	5	26.0 lbs. [11.7 kg.]
BK-WMT-B-96	96" Anodized Aluminum Wall-Mount	Dark Bronze	5	35.0 lbs. [15.8 kg.]
BK-WMT-B-144	144" Anodized Aluminum Wall-Mount	Dark Bronze	5	53.0 lbs. [24.0 kg.]
Fascia				
BK-WMF-MA-48	48" Anodized Etched Aluminum	Clear	5	11.0 lbs. [4.9 kg.]
BK-WMF-MA-60	60" Anodized Etched Aluminum	Clear	5	14.0 lbs. [6.3 kg.]
BK-WMF-MA-72	72" Anodized Etched Aluminum	Clear	5	15.0 lbs. [6.8 kg.]
BK-WMF-MA-96	96" Anodized Etched Aluminum	Clear	5	21.0 lbs. [9.5 kg.]
BK-WMF-MA-144	144" Anodized Etched Aluminum	Clear	5	31.0 lbs. [14.0 kg.]
BK-WMF-MB-48	48" Anodized Etched Aluminum	Dark Bronze	5	11.0 lbs [4.9 kg.]
BK-WMF-MB-60	60" Anodized Etched Aluminum	Dark Bronze	5	14.0 lbs. [6.3 kg.]
BK-WMF-MB-72	72" Anodized Etched Aluminum	Dark Bronze	5	15.0 lbs. [6.8 kg.]
BK-WMF-MB-96	96" Anodized Etched Aluminum	Dark Bronze	5	21.0 lbs. [9.5 kg.]
BK-WMF-MB-144	144" Anodized Etched Aluminum	Dark Bronze	5	31.0 lbs. [14.0 kg.]
End Caps				
WMEC-MPR-A	Anodized Etched Aluminum End Caps with Fasteners	Clear	10	2.0 lbs. [0.9 kg.]
WMEC-MPR-B	Anodized Etched Aluminum End Caps with Fasteners	Dark Bronze	10	2.0 lbs. [0.9 kg.]
Parts Bag				
PB-WM-250	Hardware for one door includes (2) 4-Wheel Ball-Bearing Carriers, (2) Quick-Release Top-Mount Plates, (1) Floor Guide, (2 pair) Door Stops, (1) Wrench and Fasteners	—	10	12.0 lbs. [5.4 kg.]

*12' packaged sets include hardware for 2 sets of doors



Urban Aluminum Wall-Mounted Hardware

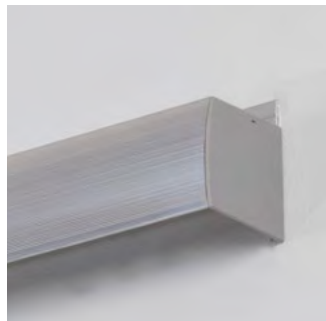
Wall-mount sliding door hardware: trend-setting barn door looks without the designer cost

- The perfect solution for those places where a pocket door is cost prohibitive or structurally not feasible
- Complete kits include track with integrated fascia, quiet 4-wheel ball-bearing carrier and all hardware
- Etched aluminum finish in milled or dark bronze
- Supports doors up to 250 lbs.
- Available in 72" and 96" lengths

Urban Aluminum Wall-Mounted System

Packaged Sets Include:

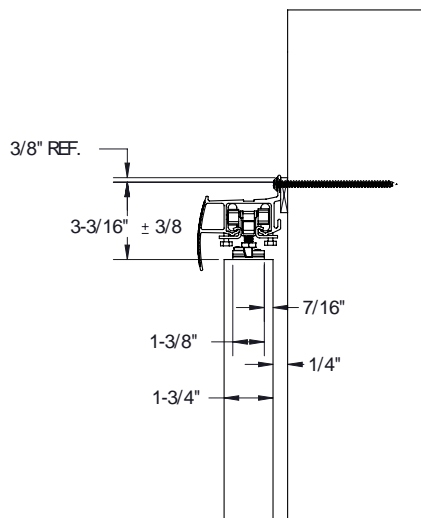
- Track
- End caps
- Parts bag



VMD-150-A
Aluminum Milled



VMD-150-B
Dark Bronze



Door thickness:

1" to 1-3/8"

Load rating:

Up to 250 lbs.

Track material:

Single aluminum box track

Carrier:

4-wheel ball-bearing

Conforms to:

ANSI BHMA A156.14-2007
Grade 1 D8011, D8681, D8691
Grade 2 D8012, D8692

Part Number	Description	Finish	Unit Pack	
			Qty	Weight
Packaged Sets				
VMD-150-A-72	72" Mill Track with integrated Fascia, End Caps (Gray), 1 X 36" Door Application	Aluminum	1	14.0 lbs. [6.3 kg.]
VMD-150-B-72	72" Anodized Track with integrated Fascia, End Caps (Dark Bronze), 1 X 36" Door Application	Dark Bronze	1	14.0 lbs. [6.3 kg.]
VMD-150-A-96	96" Mill Track with integrated Fascia, End Caps (Gray), 1 X 48" Door Application	Aluminum	1	18.0 lbs. [8.2 kg.]
VMD-150-B-96	96" Anodized Track with integrated Fascia, End Caps (Dark Bronze), 1 X 48" Door Application	Dark Bronze	1	18.0 lbs. [8.2 kg.]

Ease of Installation



1. Install wall-mount track



2. Insert carriers



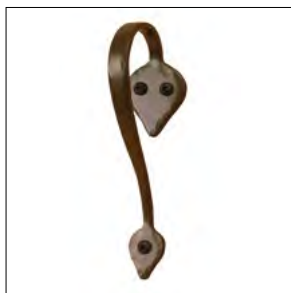
3. Snap end caps onto
wall-mount track

Handles, Pulls and Latches

Handles



HD-SFBZ-9
Hand Forged Handle
Shown in Oil Rubbed Bronze
Also available in Black and Satin Nickel



HD-CBZ-6
Hand Forged Handle
Shown in Oil Rubbed Bronze
Also available in Black and Satin Nickel



HD-ABZ-8
Hand Forged Handle
Shown in Oil Rubbed Bronze
Also available in Black and Satin Nickel



HD-BPBZ-8
Hand Forged Handle
Shown in Oil Rubbed Bronze
Also available in Black and Satin Nickel



HD-DSBZ-10
Rolling Door Handle
Shown in Oil Rubbed Bronze
Also available in Black and Satin Nickel



HD-FDBZ-11
Fleur-de-Lis Handle
Shown in Oil Rubbed Bronze
Also available in Black and Satin Nickel



HD-HBZ-8
Rectangle Handle
Shown in Oil Rubbed Bronze
Also available in Black and Satin Nickel



HD-DBBZ-8
Handle
Shown in Oil Rubbed Bronze
Also available in Black and Satin Nickel



HD-ACBZ-8
Dome Handle
Shown in Oil Rubbed Bronze
Also available in Black and Satin Nickel



HD-RBZ-8
Rectangle Handle
Shown in Oil Rubbed Bronze
Also available in Black and Satin Nickel

Pulls



HD-LPBZ-4
Large Flush Pull
Shown in Oil Rubbed Bronze
Also available in Black and Satin Nickel



PL-22-26
Flush Pull
Stainless Steel

Latches



DL-FABZ
Sliding Door Latch & Strike Plate
(non-handed)
Shown in Oil Rubbed Bronze
Also available in Black and Satin Nickel



LT-SS-23
Sliding Door Latch
Stainless Steel

Part Number	Description	Product Dimensions			Finish	Unit Pack	
		Height	Width	Depth		Qty	Weight
Handles							
HD-SDB-9	Hand Forged Handle	9"	1-3/4"	1-5/8"	Black	1	1.12 lbs. [0.05 kg.]
HD-SDSN-9	Hand Forged Handle	9"	1-3/4"	1-5/8"	Satin Nickel	1	1.12 lbs. [0.05 kg.]
HD-SFBZ-9	Hand Forged Handle	9"	1-3/4"	1-5/8"	Oil Rubber Bronze	1	1.12 lbs. [0.05 kg.]
HD-CBK-6	Hand Forged Handle	6-3/4"	1-3/4"	1-5/8"	Black	1	1.12 lbs. [0.05 kg.]
HD-CBZ-6	Hand Forged Handle	6-3/4"	1-3/4"	1-5/8"	Oil Rubbed Bronze	1	1.12 lbs. [0.05 kg.]
HD-CSN-6	Hand Forged Handle	6-3/4"	1-3/4"	1-5/8"	Satin Nickel	1	1.12 lbs. [0.05 kg.]
HD-ABK-8	Hand Forged Handle	8-1/2"	1-3/4"	1-5/8"	Black	1	1.12 lbs. [0.05 kg.]
HD-ABZ-8	Hand Forged Handle	8-1/2"	1-3/4"	1-5/8"	Oil Rubbed Bronze	1	1.12 lbs. [0.05 kg.]
HD-ASN-8	Hand Forged Handle	8-1/2"	1-3/4"	1-5/8"	Satin Nickel	1	1.12 lbs. [0.05 kg.]
HD-BPB-8	Hand Forged Handle	8-3/4"	2-3/8"	2-3/8"	Black	1	1.12 lbs. [0.05 kg.]
HD-BPBZ-8	Hand Forged Handle	8-3/4"	2-3/8"	2-3/8"	Oil Rubbed Bronze	1	1.12 lbs. [0.05 kg.]
HD-BPSN-8	Hand Forged Handle	8-3/4"	2-3/8"	2-3/8"	Satin Nickel	1	1.12 lbs. [0.05 kg.]
HD-DSB-10	Rolling Door Handle	10"	1-7/8"	1-5/8"	Black	1	1.12 lbs. [0.05 kg.]
HD-DSBZ-10	Rolling Door Handle	10"	1-7/8"	1-5/8"	Oil Rubbed Bronze	1	1.12 lbs. [0.05 kg.]
HD-DSSN-10	Rolling Door Handle	10"	1-7/8"	1-5/8"	Satin Nickel	1	1.12 lbs. [0.05 kg.]
HD-FDB-11	Fleur-de-Lis Handle	11"	2-3/4"	1-1/2"	Black	1	1.12 lbs. [0.05 kg.]
HD-FDBZ-11	Fleur-de-Lis Handle	11"	2-3/4"	1-1/2"	Oil Rubbed Bronze	1	1.12 lbs. [0.05 kg.]
HD-FDSN-11	Fleur-de-Lis Handle	11"	2-3/4"	1-1/2"	Satin Nickel	1	1.12 lbs. [0.05 kg.]
HD-HBK-8	Rectangle Handle	8-7/8"	1-7/8"	1-1/2"	Black	1	1.12 lbs. [0.05 kg.]
HD-HBZ-8	Rectangle Handle	8-7/8"	1-7/8"	1-1/2"	Oil Rubbed Bronze	1	1.12 lbs. [0.05 kg.]
HD-HSN-8	Rectangle Handle	8-7/8"	1-7/8"	1-1/2"	Satin Nickel	1	1.12 lbs. [0.05 kg.]
HD-DBB-8	Handle	8-1/2"	1-7/8"	1-1/2"	Black	1	1.12 lbs. [0.05 kg.]
HD-DBBZ-8	Handle	8-1/2"	1-7/8"	1-1/2"	Oil Rubbed Bronze	1	1.12 lbs. [0.05 kg.]
HD-DBSN-8	Handle	8-1/2"	1-7/8"	1-1/2"	Satin Nickel	1	1.12 lbs. [0.05 kg.]
HD-ACB-8	Dome Handle	8-3/4"	1-5/8"	1-1/4"	Black	1	1.12 lbs. [0.05 kg.]
HD-ACBZ-8	Dome Handle	8-3/4"	1-5/8"	1-1/4"	Oil Rubbed Bronze	1	1.12 lbs. [0.05 kg.]
HD-ACSN-8	Dome Handle	8-3/4"	1-5/8"	1-1/4"	Satin Nickel	1	1.12 lbs. [0.05 kg.]
HD-RBK-8	Rectangle Handle	8-5/8"	1-13/16"	1-1/2"	Black	1	1.12 lbs. [0.05 kg.]
HD-RBZ-8	Rectangle Handle	8-5/8"	1-13/16"	1-1/2"	Oil Rubbed Bronze	1	1.12 lbs. [0.05 kg.]
HD-RSN-8	Rectangle Handle	8-5/8"	1-13/16"	1-1/2"	Satin Nickel	1	1.12 lbs. [0.05 kg.]
Pulls							
HD-LPBZ-4	Large Flush Pull	12.5"	10.5"	3"	Oil Rubbed Bronze	1	0.018 lbs. [.008 kg]
HD-LPB-4	Large Flush Pull	12.5"	10.5"	3"	Black	1	0.018 lbs. [.008 kg]
HD-LPSN-4	Large Flush Pull	12.5"	10.5"	3"	Satin Nickel	1	0.018 lbs. [.008 kg]
PL-22-26	Flush Pull	12.5"	10.5"	3"	Stainless Steel	1	0.50 lbs. [.226 kg]
Latches							
DL-FABK	Sliding Door Latch & Strike Plate (non-handed)	12.5"	10.5"	3"	Black	1	0.018 lbs. [.008 kg]
DL-FABZ	Sliding Door Latch & Strike Plate (non-handed)	12.5"	10.5"	3"	Oil Rubbed Bronze	1	0.018 lbs. [.008 kg]
DL-FASN	Sliding Door Latch & Strike Plate (non-handed)	12.5"	10.5"	3"	Satin Nickel	1	0.018 lbs. [.008 kg]
LT-SS-23	Sliding Door Latch	12.5"	10.5"	3"	Stainless Steel	1	0.40 lbs. [.181 kg]

Privacy Locks

Features:

- Keep the uninvited out of bathrooms, bedrooms, other rooms needing privacy
- For 1-3/8" – 1-3/4" thick doors
- No need to build out frame or soffit
- Non handed design
- ADA compliant thumbturn function for commercial applications with 2-1/4" or 3-1/2" backset
- Black, stainless steel and oil rubbed bronze finishes to match KV barn door hardware



BD4214-17-us32d
2-1/4" shown in Stainless Steel
Available in Oil Rubbed Bronze
and Black



BD4312-17-us32d
3-1/2" shown in Stainless Steel
Available in Oil Rubbed Bronze
and Black

Part Number	Description	Finish	Unit Pack	
			Qty	Weight
Privacy Locks				
BD4214-17-us32d	2-1/4" backset for 2 x 4 walls, round ADA thumbturn	Stainless Steel	1	1.1 lbs. [0.4 kg.]
BD4214-17-us10b	2-1/4" backset for 2 x 4 walls, round ADA thumbturn	Oil Rubbed Bronze	1	1.1 lbs. [0.4 kg.]
BD4214-17-19g	2-1/4" backset for 2 x 4 walls, round ADA thumbturn	Black	1	1.1 lbs. [0.4 kg.]
BD4312-17-us32d	3-1/2" backset for 2 x 6 walls, round ADA thumbturn	Stainless Steel	1	1.1 lbs. [0.4 kg.]
BD4312-17-us10b	3-1/2" backset for 2 x 6 walls, round ADA thumbturn	Oil Rubbed Bronze	1	1.1 lbs. [0.4 kg.]
BD4312-17-19g	3-1/2" backset for 2 x 6 walls, round ADA thumbturn	Black	1	1.1 lbs. [0.4 kg.]

Limited Warranty / Return Policy

Limited Lifetime Warranty for Commercial Business Products

15 Year Limited Warranty for Ergonomics Products

This warranty is given to the initial purchaser of new commercial and ergonomic products purchased from Knapé & Vogt Manufacturing Company and its subsidiaries. The warranty covers defects in materials and workmanship. The warranty does not apply to defects resulting from misuse, damage or abuse, normal wear and tear, accident, modification, improper installation or maintenance, third party materials or damage during shipping. The warranty is not transferable and does not cover any subsequent purchasers of the products.

Definitions of the specific warranty time periods by product can be obtained from Customer Service at 1.800.253.1561. The warranty time period begins on the date of purchase for all products. Applicable warranty time periods are based on one 8-hour shift per day usage, and warranty time periods are adjusted and shortened proportionally for any multiple shift or excess usage.

During the warranty period, Knapé & Vogt, will, at its option, repair or replace any defective product with a comparable product or component. This limited warranty is for repair or replacement of defective products only and does not cover any other costs such as removal, installation, or other related expenses.

For warranty service, please contact Knapé & Vogt Manufacturing Company, 2700 Oak Industrial Drive, Grand Rapids, MI 49505, Attention: Customer Service. Information regarding the claimed defect and date of purchase of the product must be provided. Any defective product must be returned postage or freight prepaid to Knapé & Vogt.

THIS LIMITED WARRANTY CONSTITUTES THE ONLY WARRANTY FOR THE PRODUCTS AND ALL OTHER WARRANTIES OR REPRESENTATIONS, EXPRESS OR IMPLIED, BY OPERATION OF LAW OR OTHERWISE, INCLUDING BUT NOT LIMITED TO ANY IMPLIED WARRANTY OF MERCHANTABILITY OR FITNESS FOR A PARTICULAR PURPOSE, ARE EXPRESSLY DISCLAIMED (some states do not allow limitations on how long an implied warranty lasts).

THIS LIMITED WARRANTY CONSTITUTES THE SOLE REMEDY AVAILABLE WITH REGARD TO ANY DEFECTIVE PRODUCTS. KNAPE & VOGT SHALL NOT BE LIABLE FOR ANY INCIDENTAL, INDIRECT, CONSEQUENTIAL OR SPECIAL DAMAGES, INCLUDING WITHOUT LIMITATION, LOSS OF TIME, INCONVENIENCE, OR LOST REVENUES OR PROFITS (some states do not allow the exclusion or limitation of incidental or consequential damages).

Copyright ©2018 Knapé & Vogt Manufacturing Company, all rights reserved.

Standard KV Commercial Warranty

Return Policy for special order or nonstock items:

We're sorry, we cannot accept returns on nonstock products or special order products unless there is a Knapé & Vogt error — which we will be happy to correct. To return product(s), please follow these procedures:

Please contact Knapé & Vogt Customer Service at 1.800.253.1561. A Customer Service Representative will assist you with getting a Return Goods Authorization (RGA) number. The original P.O. is required to receive a RGA number. Please return product within 30 days of issuance of the RGA number.

Restocking Fees:

- All resalable product returned in original resalable packaging will be assessed a 25% fee for restocking and handling.
- Minimum fee is \$25.
- All resalable products returned not in resalable original packaging will be assessed a 25% fee for repackaging in addition to the 25% restocking and handling fee.
- Above referenced fees will be waived on returns resulting from a Knapé & Vogt error.

Shipping:

You are responsible for all return shipping charges to return the product unless we made an error in shipping your order, i.e., the product we shipped is not the one you ordered, or is defective.

In the US, please ship to: Knapé & Vogt

Return Goods Department, 3800 Eastern Ave SE, Wyoming, MI 494509

In Canada, please ship to: Knapé and Vogt/ Vanguard, Attn: Return Goods Department, 265 Export Blvd, Mississauga, ON L5S 1Y4

- Ensure the product(s) are properly packaged to prevent shipping damage.
- Include RGA number with return.
- Ensure all products returned match quantities and products listed on the assigned RGA.

Credit:

- A credit memo will be issued upon inspection and approval of the returned product.
- Upon receipt and inspection Knapé & Vogt will determine credit amount and notify you of any discrepancies.
- DO NOT make any financial adjustments to your account prior to Knapé and Vogt issuing a credit memo for returned goods.
- Please allow a minimum of 14 days for us to receive and process your return.
- We will credit or refund the value of the product total and any taxes you were charged less applicable fees. (excluding delivery charges).
- Refunds will be given in the same form of payment. Adjustments to credit cards should appear within two billing cycles.

Replacement Orders:

- Any replacement orders will be charged to your account.
- A credit memo will be issued for returned products that have been approved.

RGA Status Information:

- Visit www.customercareconnection.com.
- Enter your account information.
- If you do not already have your account set up for this free service, please register at www.customercareconnection.com.
- Your satisfaction is our priority. We are happy to accept returns or exchanges for any resalable or defective products within 60 days of the shipping date.



KNAPE & VOGT.

2700 Oak Industrial Dr. NE
Grand Rapids, MI 49505-6026 USA
1.800.253.1561 | 616.459.3311
Fax: 877.636.3290
www.kv.com

This and other KV literature is available for download at www.kv.com > Resource Library

Knap & Vogt reserves the right to change product specifications at any time without notice and without incurring responsibility for existing units.
©2021 Knap & Vogt. KV and the KV logo are trademarks of Knap & Vogt.

OL2774/1121