

8300 SERIES

Heavy-Duty Commercial Grade 1 Rim Exit Devices



Standard Features

- **Performance** Complies with ANSI A156.3, 1994, Grade 1, UL/ULC listed
- **Rail** Fits 28" to 36" doors
- **Latch** Stainless steel 5/8" throw
- **Backset** 2-3/4"
- **Strike** Adjustable with slotted holes for adjustments
- **Standard Cylinder** Standard cylinder Schlage (SCC) - 6-pin solid brass, C keyway, keyed different (KD).
- **Fasteners** Accommodates wood or metal doors
- **Door Range** 1-3/4" to 2" thickness
- **Door Preparation** Surface mounted
- **Warranty** 10 year limited

Optional Features

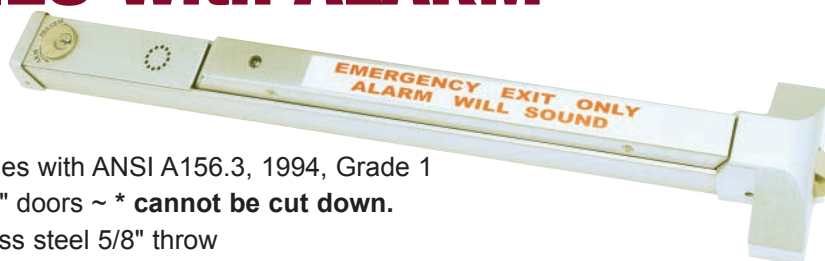
- **Exterior Trim** Exterior blank pull, exterior pull with cylinder cut out, entry ball knob trim, storeroom ball knob trim, entry lever trim without clutch, exterior thumbpiece trim, pull trim with rim cylinder, exterior escutcheon lever trim, heavy-duty escutcheon entry lever trim
- **UL Listed** 3 hour fire rated device available
- **Fire Rated** UL labeled fire rated device available for use on doors rated up to 3 hours. Fire rated device also available for larger doors up to a maximum of 4' x 8'. Specify when ordering.
- **Strikes** Other strikes available

Keying Options for Select Knob and Lever Trim

- **Tell Cylinder** Restricted Tell keyway cylinder can key both the cylinder and interchangeable core in one lock. The cylinders and IC cores are interchangeable. Tell keyway cylinder is available **only** keyed to 6-pin. Tell IC cylinder can be keyed to 6-pin or 7-pin interchangeable core (IC).
- **Other Cylinder Options** Arrow A (ARA), Corbin 59A1 (C059A1), Corbin 60 (C06), Corbin Russwin L4 (CL4), Kwikset (KW1), Russwin D1 (RD1), Sargent LA (SAL), Schlage E (SCE), Schlage F (SCF), Weiser E (WRE), Yale 8 (YA8), Yale GA (YGA)
ALL CYLINDERS 6-PIN. CAN ALSO BE PINNED 5-PIN.
- **IC Keyway Cylinder** Tell, Best A (BA), Best B (BB), Best C (BC), Best D (BD), Best E (BE), Best F (BF), Best G (BG), Best H (BH), Best J (BJ), Best K (BK), Best L (BL), Best M (BM), Best Q (BQ), Best
AVAILABLE 6- OR 7-PIN
- **Keying Options** Grand master key (GMK), construction master key (CMK), master key (MK), keyed different (KD), keyed alike (KA), interchangeable core uncombined (IC), 0-bitted (0BIT)



8300 SERIES with ALARM



Standard Features

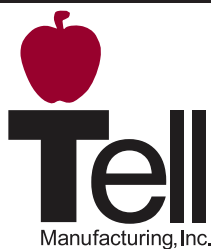
- **Performance** Complies with ANSI A156.3, 1994, Grade 1
- **Rail** Fits 36" doors ~ * **cannot be cut down.**
- **Latch** Stainless steel 5/8" throw
- **Backset** 2-3/4"
- **Strike** Adjustable with slotted holes for adjustments
- **Standard Cylinder** Standard cylinder Schlage (SCC) - 6-pin solid brass, C keyway, keyed different (KD).
- **Fasteners** Accommodates wood or metal doors
- **Door Range** 1-3/4" to 2" thickness
- **Door Preparation** Surface mounted
- **Warranty** 10 year limited for device; 1 year for electronics

Alarm Features

- **Horn** Alarm unit has an internal horn. When the push rail is depressed, the horn sounds to provide an audible means of signaling that the door has been opened and violated.
- **Cut Off Feature** The unit has changeable 2 minute alarm cutoff or manual reset. It is preset at factory for 2 minute alarm cut off.
- **Jumper Cable** Jumper cable is provided to switch to continuous alarm.
- **Key** The key switch to turn the alarm off is a standard 1 1/4" **mortise cylinder** with "C" keyway. The alarm operates on one standard 9 volt transistor battery. When battery is weak the horn will emit an intermittent signal.
- **Switches** Alarmed units are supplied with two switches. One switch monitors the push rail and the other switch monitors the latchbolt for fool proof security.
- **Decal** Unit includes "Emergency exit only, Alarm will sound" decal for application on door or unit.

Keying Options for Select Knob and Lever Trim

- **Tell Cylinder** Restricted Tell keyway cylinder can key both the cylinder and interchangeable core in one lock. The cylinders and IC cores are interchangeable. Tell keyway cylinder is available **only** keyed to 6-pin. Tell IC cylinder can be keyed to 6-pin or 7-pin interchangeable core (IC).
- **Other Cylinder Options** Arrow A (ARA), Corbin 59A1 (C059A1), Corbin 60 (C06), Corbin Russwin L4 (CL4), Kwikset (KW1), Russwin D1 (RD1), Sargent LA (SAL), Schlage E (SCE), Schlage F (SCF), Weiser E (WRE), Yale 8 (YA8), Yale GA (YGA)
ALL CYLINDERS 6-PIN. CAN ALSO BE PINNED 5-PIN.
- **IC Keyway Cylinder** Tell, Best A (BA), Best B (BB), Best C (BC), Best D (BD), Best E (BE), Best F (BF), Best G (BG), Best H (BH), Best J (BJ), Best K (BK), Best L (BL), Best M (BM), Best Q (BQ), Best
AVAILABLE 6- OR 7-PIN
- **Keying Options** Grand master key (GMK), construction master key (CMK), master key (MK), keyed different (KD), keyed alike (KA), interchangeable core uncombined (IC), 0-bitted (0BIT)



8300 Series Accessories

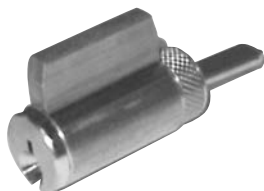
Non-Restricted Keyway

FOR KNOB TRIM (EMP), LEVER TRIM (CTL)

CL100219 —
Cylinder, Schlage C, US26D

CL100584 —
Cylinder, Schlage C, US4

Standard brass 6-pin cylinder
SCC keyway, optional keyways
available, (see price list).



CL100268 —
IC Core Best A 6 Pin, US26D

CL100270 —
IC Core Best A 7 Pin, US26D

CL100269 —
IC Core Best A 6 Pin, US4

CL100271 —
IC Core Best A 7 Pin, US4
Small format interchangeable
core brass cylinder 6-pin
standard, 7-pin available. Best
"A" keyway standard.



Tell Restricted Keyway

FOR LEVER TRIM (CTL), THUMBPIECE TRIM (TP81), ESCUTCHEON LEVER TRIM (ESC), HEAVY-DUTY ESCUTCHEON ENTRY LEVER TRIM (ESCHD), PULL TRIM (PT881)

TELL CYLINDERS:

CL101503 —
6 pin Tell cylinder, US26D

CL101504 —
6 pin Tell cylinder, US4



TELL INTERCHANGEABLE CORES:

CL101499 —
6 pin Tell IC core, US26D

CL101500 —
6 pin Tell IC core, US4

CL101501 —
7 pin Tell IC core, US26D

CL101502 —
7 pin Tell IC core, US4



FINISHES: US26D=Satin Chrome, US4=Satin Brass



8300 Series Trim

8PDT

EX100013 (AL)

Exterior blank pull.



8P03

EX100014 (AL)

Exterior pull with cylinder cut out.



TP81

EX100008 (AL)

Exterior thumbpiece trim, includes 1-1/4" mortise cylinder SCC



EMP808

EX100010 (entry, US32D)

EMP875

EX100011 (passage, US32D)

EMP886

EX100012 (storeroom, US32D)

Exterior sectional ball knob trim.



PT881

EX100090 (AL)

Pull trim with rim cylinder



CTL / Lever Trim (w/out clutch)

EX100005 (entry, US26D)*

EX100006 (passage, US26D)

EX100038 (storeroom, US26D)

Exterior sectional lever trim.



ESC / Escutcheon Trim

EX100054 (entry, US26D)

EX100056 (passage, US26D)

EX100055 (storeroom, US26D)

EX100057 (dummy, US26D)

Exterior escutcheon free wheeling lever trim, includes 1-1/4" mortise cylinder SCC



ESCHD / Escutcheon Trim, Heavy-Duty

EX100303 (entry, US32D)

**-03 Storeroom function available, consult customer service.*

Requires EX100336 cam.

Exterior heavy-duty escutcheon free wheeling lever trim, includes 1-1/4" mortise cylinder SCC



**Entry CTL lever trim also available in
US3 / Bright Brass / EX100171
Duro / Duronodic / EX100173*

NOTE: AL=Aluminum, US32D=Satin Stainless Steel, US26D=Satin Chrome

TELL MANUFACTURING, INC — Page 12 — 2014

CORPORATE OFFICE: 18 Richard Drive, Littitz, PA 17543 TOLL FREE: 800-433-4047 PHONE: 717-625-2990 FAX: 717-625-7095
OTHER LOCATIONS: BIRMINGHAM, ALABAMA MIRA LOMA, CALIFORNIA ELKHART, INDIANA HOUSTON & DALLAS, TEXAS
WEBSITE: www.tellmfg.com



8300 Series Accessories

416 Strike

Standard strike for rim 8300. Slotted holes for easy adjustment. Black powder coated finish.



Glass Shim Plate

EX100050

Shim plate standard 1/8"



Overlapping Strike

EX100007 (US32D)

Optional strike used on inactive door when pairs of doors require rim 8300 on active door.



NOTE: US32D=Satin Stainless Steel



How To Order 8300 Series

IC KEYWAY CYLINDER
AVAILABLE 6- OR 7-PIN

<p>EXIT DEVICE FINISH</p> <p>DURO — Duronodic</p> <p>US3 — Bright Brass</p> <p>US32D — Satin Stainless Steel</p> <p>AL — Aluminum</p>	<p>TRIM</p> <p>EX100303 — ESCHD Entry Heavy-Duty Escutcheon Lever Trim (US32D)</p> <p>EX100057 — ESC Dummy Escutcheon Lever Trim (US26D)</p> <p>EX100055* — ESC Storeroom Escutcheon Lever Trim (US26D)</p> <p>EX100056 — ESC Passage Escutcheon Lever Trim (US26D)</p> <p>EX100054* — ESC Entry Escutcheon Lever Trim (US26D)</p> <p>EX100090* — PT881 Pull Trim with Rim Cylinder (AL)</p> <p>EX100008* — TP81 Thumbpiece Trim (AL)</p> <p>EX100038* — CTL Storeroom Lever Trim (US26D)</p> <p>EX100006 — CTL Passage Lever Trim (US26D)</p> <p>EX100005* — CTL Entry Lever Trim (US26D) **</p> <p>EX100012 — EMP Storeroom Ball Knob Trim (US32D)</p> <p>EX100011 — EMP Passage Ball Knob Trim (US32D)</p> <p>EX100010 — EMP Entry Ball Knob Trim (US32D)</p> <p>EX100014* — 8P03 Exterior Pull (AL)</p> <p>EX100013 — 8PDT Blank Pull (AL)</p>	<p>TELL — Tell</p> <p>XX — Not Specified</p> <p>00 — Less Core</p> <p>BLK — Black Construction Core</p> <p>BU — Best U</p> <p>BQ — Best Q</p> <p>BM — Best M</p> <p>BL — Best L</p> <p>BK — Best K</p> <p>BJ — Best J</p> <p>BH — Best H</p> <p>BG — Best G</p> <p>BF — Best F</p> <p>BE — Best E</p> <p>BD — Best D</p> <p>BC — Best C</p> <p>BB — Best B</p> <p>BA — Best A</p>	<p>KEYING</p> <p>0BIT — 0-Bitted</p> <p>IC — Interchangeable Core Uncombined</p> <p>KA — Keyed Alike</p> <p>KD — Keyed Different</p> <p>MK — Master Key</p> <p>CMK — Construction Master Key</p> <p>GMK — Grand Master Key</p>
--	--	---	--

FIRE RATED **F**

8300 **AL** **B** **EX100013** **416** **BA** **SCC** **GMK**

8300 — Rim

8300 — Alarm (ALM)

SERIES

B — 36 inches

A — 48 inches

LENGTH

416 — 416 Strike

EX100050 — Shim Plate

EX100007 — Overlapping Strike (US32D)

ACCESSORIES

SCC — Schlage C 6-Pin

ARA — Arrow A

C059A1 — Corbin 59A1

C06 — Corbin 60

CL4 — Corbin Russwin L4

KWI — Kwikset KW1

RD1 — Russwin D1

SAL — Sargent LA

SCE — Schlage E

SCF — Schlage F

WRE — Weiser E

YA8 — Yale 8

YGA — Yale GA

TELL — Tell

NON-IC KEYWAY CYLINDER

ALL CYLINDERS AVAILABLE 6-PIN. CAN ALSO BE PINNED 5-PIN.
TELL KEYWAY CYLINDER IS AVAILABLE ONLY KEYED TO 6-PIN.