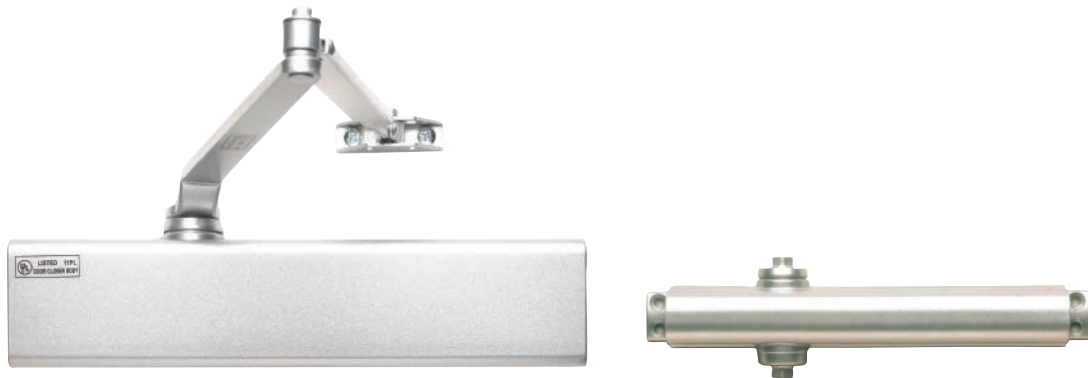




## 800 SERIES

### Heavy-Duty Commercial Grade 1 Surface Applied Closers



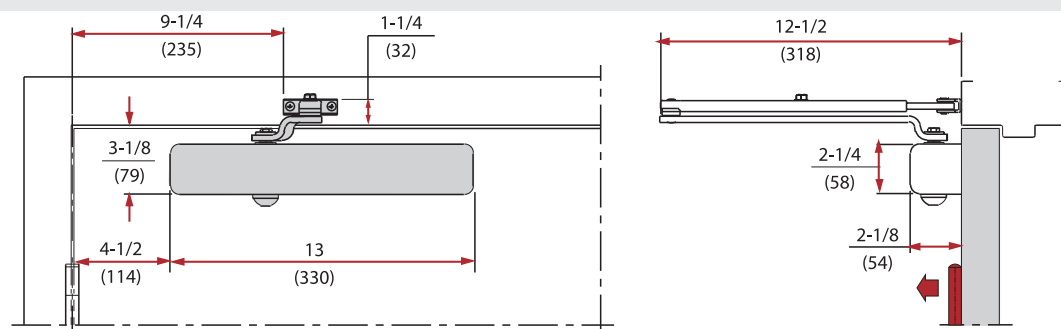
#### Standard Features

- **Performance** Complies with ANSI A156.4, Grade 1, 2 million cycles, UL/ULC listed up to 3 hours fire rated
- **Chassis/Closer** Cast aluminum
- **Handing** Non-handed
- **Mounting** **TRI-PACK** — regular, top jamb and parallel arm applications.
- **Main Arm** Stamped steel, accommodates reveals up to 3 1/4", adjustable extension arm
- **Spring Power** Spring power adjustable size 1 - 6 standard for interior and exterior applications
- **Backcheck** Adjustable, hydraulic - providing cushioning and preventing uncontrolled openings of the door
- **Valves** Adjustable, independent, non-critical (sweep and latch), consistent closing speeds
- **Fasteners** Metal screws included for hollow metal and aluminum mounting applications. Wood screws included for wood door mounting applications. Closers are packed with thru-bolts.
- **Door Range** Up to 180 degrees
- **Door Preparation** 12" horizontal and 3/4" vertical mounting hole locations (retrofits traditional closer)
- **Cover** High impact plastic streamlined cover
- **Warranty** 25 year limited



## 800 Series Application Drawings:

### Regular Hinge (Pull) Side Mounting



4-1/2" x 4-1/2" Butt Hinges

Minimum door rail for mounting closer 2-1/2".  
Minimum door rail to bottom of slim plastic cover 2-5/8".  
Minimum door rail to bottom of optional full cover 3-5/8".  
Backcheck positioning valve in "OFF" position.

**MAXIMUM  
OPENING**

180°

**APPROX  
BACKCHECK\***

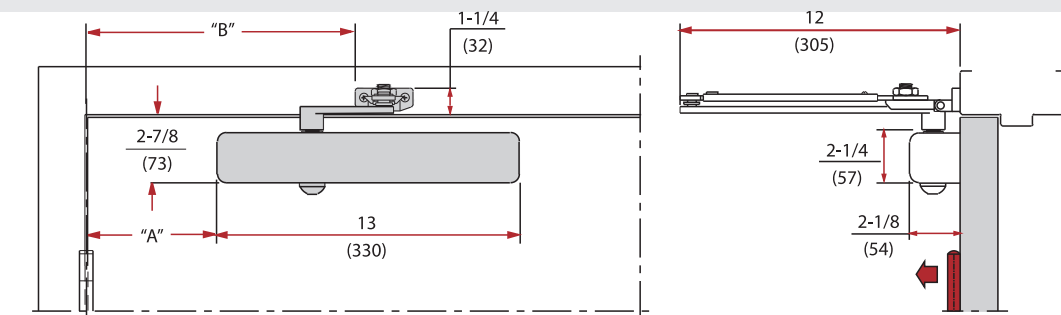
65°-180°

**APPROX.  
DELAYED  
ACTION**

180°-65°

\*Backcheck is advanced approximately 15° with positioning valve on.

### Regular Hold Open Arm



4-1/2" x 4-1/2" Butt Hinges

Minimum door rail for mounting closer 2-5/8".  
Minimum door rail to bottom of slim plastic cover 2-3/4".

Minimum door rail to bottom of optional full cover 3-3/4".  
Backcheck positioning valve in "OFF" position.

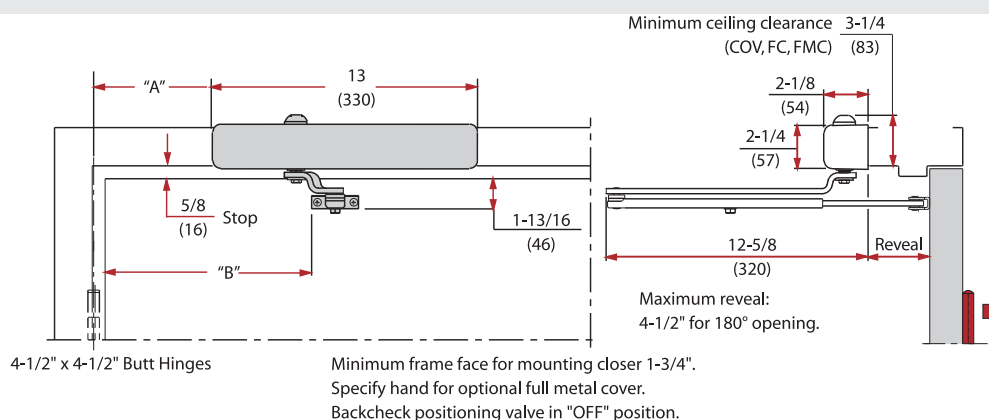
TEMPLATE REFERENCE	DIM "A"	DIM "B"	APPROX. MAXIMUM OPENING	APPROX. BACKCHECK*	APPROX. DELAYED ACTION	MINIMUM HOLD OPEN	MAXIMUM HOLD OPEN
TO 100°	7" (178)	12-3/8" (321)	110°	65°-110°	110°-65°	80°	110°
100°-120°	6" (152)	11-5/8" (295)	125°	70°-125°	125°-70°	90°	125°
OVER 120°	3-1/2" (89)	9-1/8" (232)	180°	85°-180°	180°-85°	100°	165°

\*Backcheck is advanced approximately 15° with positioning valve on.



## 800 Series Application Drawings:

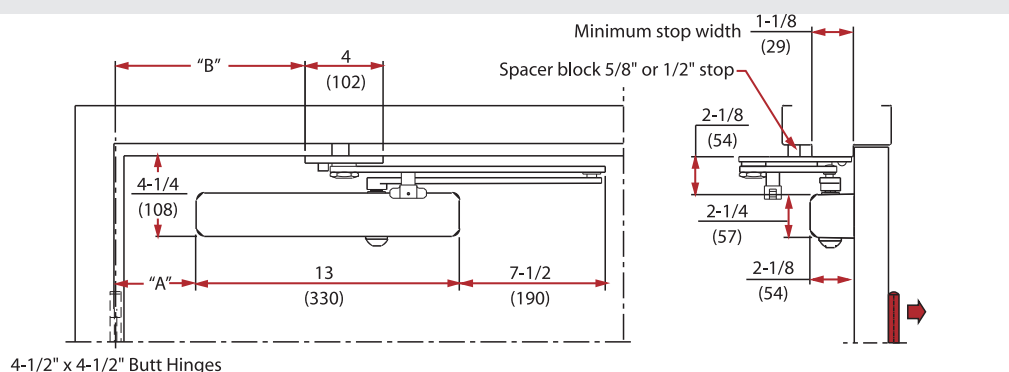
### Top Jamb (Push Side) Mounting



TEMPLATE REFERENCE	DIM \"A\"	DIM \"B\"	REVEAL	ARM	APPROX. MAXIMUM OPENING	APPROX. BACKCHECK*	APPROX. DELAYED ACTION
TO 180°	4-1/2\" (114)	9-1/4\" (235)	0\"	AF AR	180°	70°-180°	180°-70°
			4\"	AF AR	180°	75°-180°	180°-75°
TO 180°	4-1/2\" (114)	9-1/4\" (235)	4\"	AFJ ARJ	180°	75°-180°	180°-75°
			8\"	AFJ ARJ	165°	80°-165°	165°-80°

\*Backcheck is advanced approximately 15° with positioning valve on.

### Heavy-Duty Parallel Arm With Dead Stop

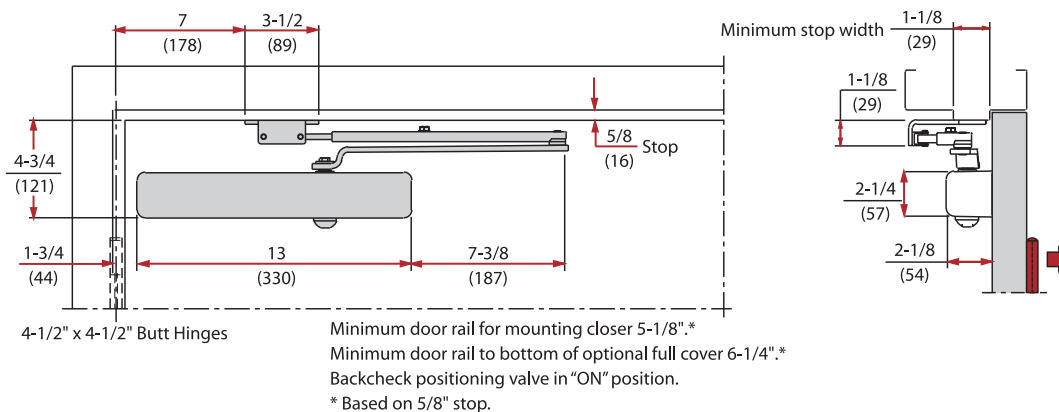


TEMPLATE REFERENCE	DIM \"A\"	DIM \"B\"	APPROX. MAXIMUM OPENING	APPROX. BACKCHECK*	APPROX. DELAYED ACTION	MINIMUM HOLD OPEN
85°	4-5/8\" (117)	10-5/8\" (270)	85°	50°-85°	85°-65°	26\"
90°	3-7/8\" (98)	9-3/4\" (248)	90°	55°-90°	90°-70°	25\"
100°	3-5/8\" (57)	8-5/8\" (219)	100°	60°-100°	100°-75°	24\"
110°	1-1/2\" (38)	7-1/2\" (191)	110°	65°-110°	110°-80°	23\"



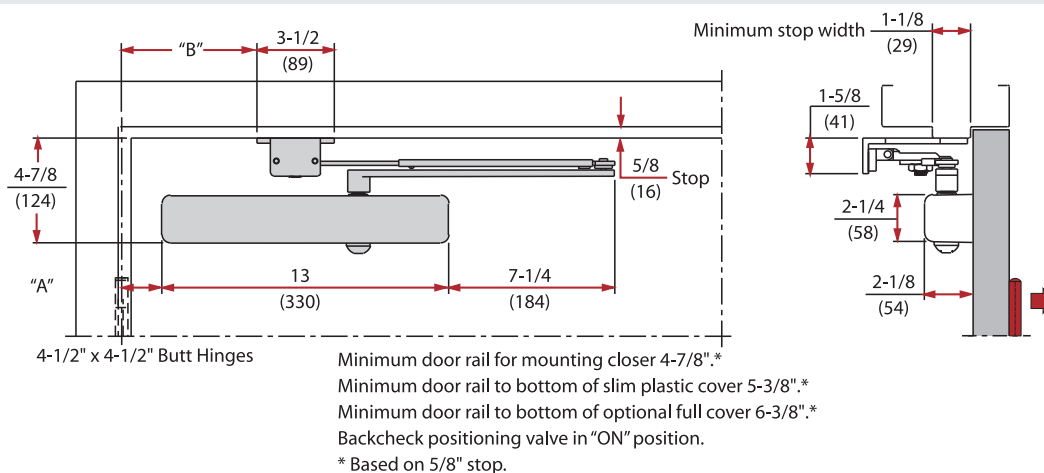
## 800 Series Application Drawings:

### Parallel Arm (Push Side) Mounting



MAXIMUM OPENING	APPROX. BACKCHECK	APPROX. DELAYED ACTION	MINIMUM DOOR WIDTH
180°	60°-180°	180°-75°	24"

### Parallel Hold Open Arm

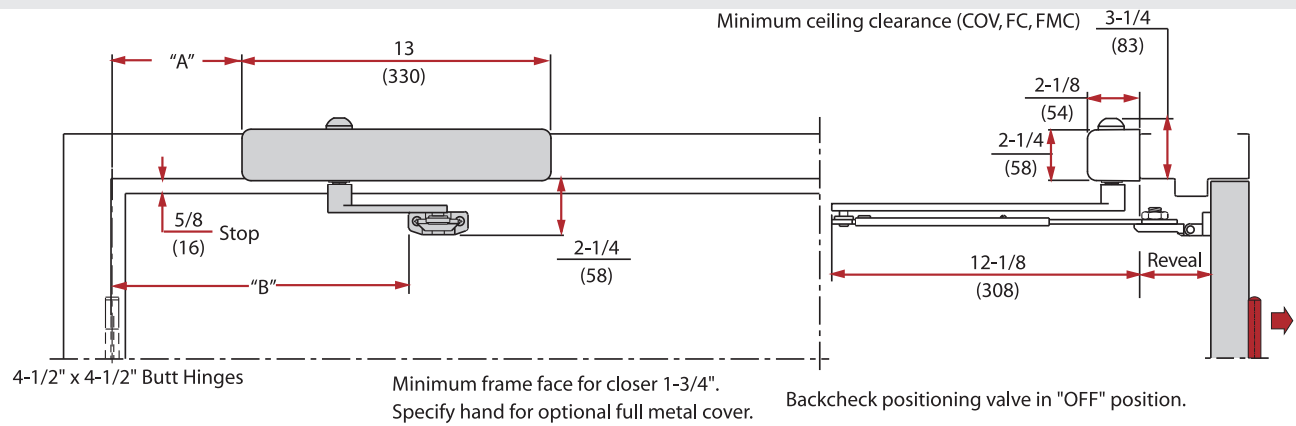


TEMPLATE REFERENCE	DIM "A"	DIM "B"	APPROX. MAXIMUM OPENING	APPROX. BACKCHECK RANGE	APPROX. DELAYED ACTION	MIN. HOLD OPEN	MAX. HOLD OPEN	MIN. DOOR WIDTH
TO 100°	3-5/8"	9"	110°	65°-110° (92)	110°-80° (228)	45°	105°	29"
OVER 100°	1-1/2" (38)	6-1/2" (165)	180°	80°-180°	180°-95°	45°	175°	24"



## 800 Series Application Drawings:

### Top Jamb Hold Open Arm



TEMPLATE REFERENCE	DIM "A"	DIM "B"	REVEAL	ARM	APPROX. MAXIMUM OPENING	APPROX. BACKCHECK*	APPROX. DELAYED ACTION RANGE	MIN. HOLD OPEN	MAX. HOLD OPEN
TO 100°	7-1/2" (190)	13-1/8" (333)	0"	FH	110°	70°-110°	110°-70°	70°	105°
			4"	FH	105°	75°-105°	105° - 75°	70°	100°
			4"	FHJ	105°	75°-105°	105° - 75°	70°	100°
			8"	FHJ	100°	80°-100°	110° - 80°	70°	95°
TO 120°	6" (152)	11-5/8" (295)	0"	FH	125°	75°-125°	75°-125°	75°	120°
			4"	FH	120°	80°-120°	120° - 80°	75°	115°
			4"	FHJ	120°	80°-120°	120° - 80°	75°	115°
			8"	FHJ	115°	85°-115°	115° - 85°	75°	110°
OVER 120°	3-1/2" (89)	9-1/8" (232)	0"	FH	180°	85°-180°	180° - 85°	80°	170°
			4"	FH	180°	90°-180°	180° - 90°	80°	170°
			4"	FHJ	180°	90°-180°	180° - 90°	80°	170°
			8"	FHJ	165°	100°-165°	165° - 100°	85°	155°

\*Backcheck is advanced approximately 15° with positioning valve on.



## 800 Series Arm Options:

### Regular Arm, (Standard)

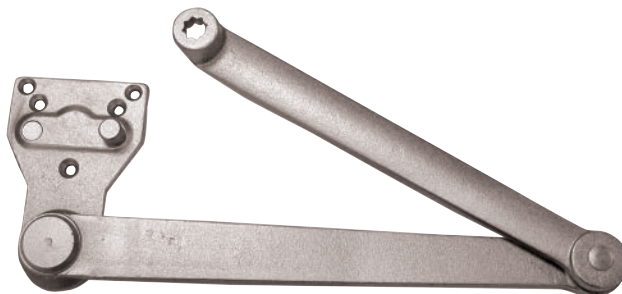
DC100279 (AL)

Complete arm assembly with forged steel main arm, full articulating adjusting arm and 10mm threaded rod and shoe to accommodate 0" to 3-1/4" inch reveals.



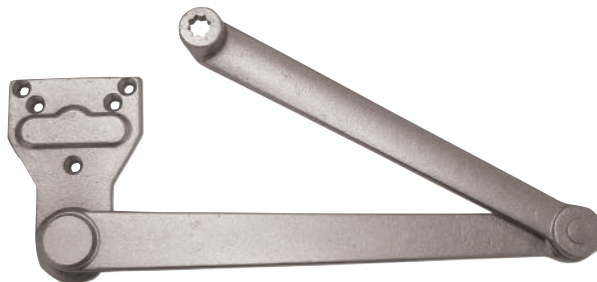
### Dead Stop Arm (DS)

DC100285 (AL)



### Super Parallel Hold Open Arm (SPH)

DC100282 (AL)



## 800 Series Cover:

### Full Plastic Cover (COV), (Standard)

DC100288

High impact full plastic cover, non-handed.



NOTE: AL=Aluminum

TELL MANUFACTURING, INC — Page 32 — 2014

CORPORATE OFFICE: 18 Richard Drive, Lititz, PA 17543 TOLL FREE: 800-433-4047 PHONE: 717-625-2990 FAX: 717-625-7095  
OTHER LOCATIONS: BIRMINGHAM, ALABAMA MIRA LOMA, CALIFORNIA ELKHART, INDIANA HOUSTON & DALLAS, TEXAS  
WEBSITE: [www.tellmfg.com](http://www.tellmfg.com)

## 800 Series Accessories:



### Sex Nuts:

#### SNB1

DC100222 (AL)

DC100095 (Duro)

DC100096 (Gold)

SNB1 — Sex nuts with machine screws for 1-3/4" (44 mm) door.

#### SNB2

DC100089 (AL)

DC100203 (Duro)

SNB2 — Sex nuts with machine screws for 1-3/8" (35 mm) door.



### Drop Plate / DC100245 (AL)

For top jamb mount when overhead ceiling clearance is less than 1-7/8" or to provide clearance for overhead holder. Also permits parallel arm installation on doors with a minimum top rail of 2-1/2".



### Parallel Arm Bracket, (PAB) (Standard)

DC100117 (AL)

DC100192 (Duro)

DC100216 (Gold)

Used when mounting as parallel arm with regular main arm.



## 800 Series Cross Reference:

TELL	CAL-ROYAL	DORMA	DOR-O-MATIC	INTERNATIONAL	LCN	NORTON	PARKER	SENTINEL	YALE	SARGENT
816	801S*	8616	SC80/SC81	9000	1460	8000	900BC	2500	3000*	1430
										1431

**NOTE:** This chart has been prepared by comparing functions of door closers. Since no products are exactly alike, the data on this chart represents our judgement of which products are most similar. Because information has been obtained from trade sources, it is not guaranteed nor represented that any specific product exactly equals any other product.

\* RETROFIT INSTALLATION HOLE FOR HOLE

## 800 Series Door Sizing Chart:

Door Sizing Chart	D O O R   W I D T H							
		2'-0" min.	2'-6" max.	3'-0" max.	3'-6" max.	4'-0" max.	4'-6" max.	5'-0" max.
<b>CLOSER</b> 816 Regular & Top Jamb								
	Interior	✓	✓	♿	✓	✓	✓	✓
	Exterior	✓	✓	♿	✓	✓	✓	N/A
	816 PA							
	Interior	✓	✓	♿	✓	✓	✓	N/A
	Exterior	✓	✓	♿	✓	✓	N/A	N/A

✓ = Recommended

N/A = Not applicable or recommended

♿ = Opening force 5 lbs. on interior and 8.5 lbs. on exterior doors

**TELL MANUFACTURING, INC** — Page 33 — 2014

**CORPORATE OFFICE:** 18 Richard Drive, Lititz, PA 17543 **TOLL FREE:** 800-433-4047 **PHONE:** 717-625-2990 **FAX:** 717-625-7095

**OTHER LOCATIONS:** BIRMINGHAM, ALABAMA MIRA LOMA, CALIFORNIA ELKHART, INDIANA HOUSTON & DALLAS, TEXAS

**WEBSITE:** www.tellmfg.com

# How to Order 800 Series:

