

Fitting for 2-3 top-running wooden doors up to 36 kg (79 lbs.), with groove mounted running track. With soft and self closing mechanism. Design Inside.

Product highlights



Flexibility

Wide range of applications for sliding door cabinets
in any dimension



Productivity

Easy installation with tool-less clip-on system and convenient height adjustment

Technical specifications



Max. 36 kg (79 lbs.)



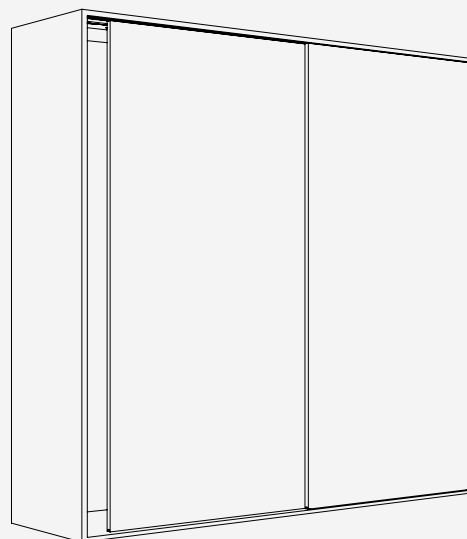
Max. 2200 mm (7'2 5/8")



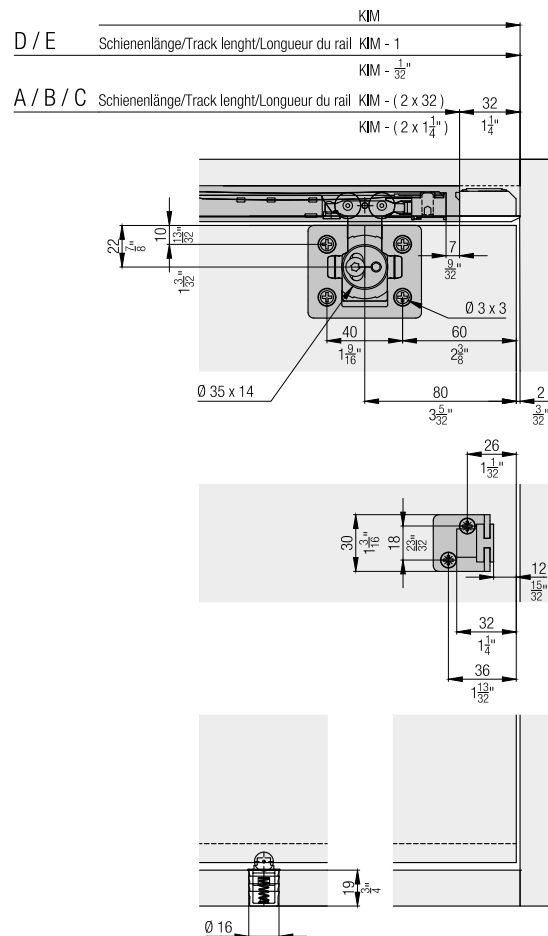
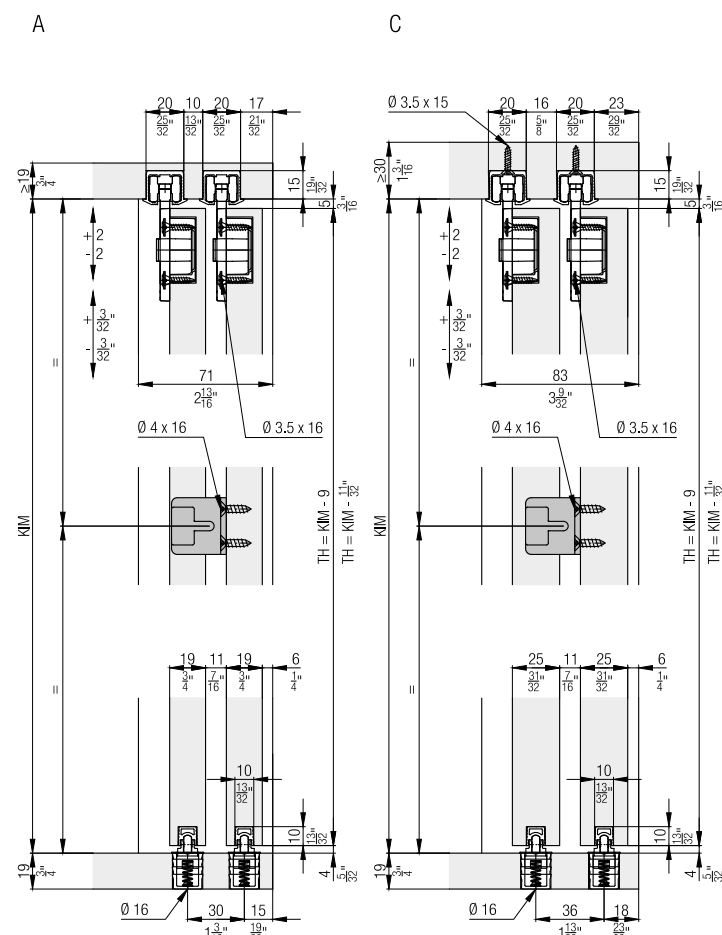
Max. 1000 mm (3'3 3/8")



19–25 mm (3/4" to 31/32")



Installation examples



**Set for 2 wooden doors up to 36 kg (79 lbs.),
with height adjustment**

	No.
Hawa Clipo 36 H IS, for 2 doors	053.3353.072

		053.3353.072	No.
Set consisting of:			
	Running gear double, left	2	053.3346.071
	Running gear double, right	2	053.3347.071
	Stopper, plastic, gray	4	057.3148.071
	Housing, plastic	4	053.0332.001
	Fillister head screw, 3.5x16 mm (5/32" x 5/8"), steel, zinc-plated	16	766.6052.100
	Follower Hawa Combino/Hawa Clipo, plastic	1	055.3123.071
	Adapter to follower steel, zinc-plated	1	055.0213.101
	Flat countersunk head chipboard screw 4x16 mm (5/32" x 5/8"), steel, zinc-plated	2	600.0000.253
	Bottom guide, plastic, gray	2	055.3081.071

**Set for 3 wooden doors up to 36 kg (79 lbs.),
with height adjustment**

	No.
Hawa Clipo 36 H IS, for 3 doors	053.3353.073




		053.3353.073	No.
Set consisting of:			
	Running gear double, left	3	053.3346.071
	Running gear double, right	3	053.3347.071
	Stopper, plastic, gray	4	057.3148.071
	Housing, plastic	6	053.0332.001
	Fillister head screw, 3.5x16 mm (5/32" x 5/8"), steel, zinc-plated	24	766.6052.100
	Buffer, with adhesive	2	061.3083.001
	Bottom guide, plastic, gray	3	055.3081.071

Running tracks


		mm (inch)	No.
	A: Single running track, for glue fixing, aluminum, anodized	2,500 (8' 2 7/16")	053.3324.250
		3,500 (11' 5 25/32")	053.3324.350
		6,000 (19' 8 7/32")	053.3324.600
	B: Single running track, swivel lug, aluminum, anodized (not for hard wood/ MDF)	2,500 (8' 2 7/16")	053.3327.250
		3,500 (11' 5 25/32")	053.3327.350
		6,000 (19' 8 7/32")	053.3327.600
	C: Single running track, for screw fixing, aluminum, anodized	2,500 (8' 2 7/16")	053.3325.250
		3,500 (11' 5 25/32")	053.3325.350
		6,000 (19' 8 7/32")	053.3325.600
	D: Double running track, for screw fixing, aluminum, anodized, for door thickness of 25 mm (31/32")	2,500 (8' 2 7/16")	053.3328.250
		3,500 (11' 5 25/32")	053.3328.350
		6,000 (19' 8 7/32")	053.3328.600
	E: Double running track, for screw fixing, aluminum, anodized, for door thickness of 19 mm (3/4")	2,500 (8' 2 7/16")	053.3339.250
		3,500 (11' 5 25/32")	053.3339.350
		6,000 (19' 8 7/32")	053.3339.600

Track end piece set for single running tracks


	No.
Track-end section, for screw fixing, plastic, gray, 2-piece set	053.3354.071
Track-end section, swivel lug, plastic, gray, 2-piece set	053.3355.051

		053.3354.071	053.3355.051	No.
Set consisting of:				
	Track-end piece, for screw fixing, plastic	2		053.0334.001
	Chipboard screw, 4x12 mm (5/32"x15/32"), steel, zinc-plated	2		600.0000.704
	Track-end piece, with swivel lug, plastic		2	053.3351.071

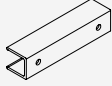
Guide tracks

		mm (inch)	No.
	Guide track, for glue fixing, plastic, gray	2,500 (8' 2 7/16")	055.3171.250
		3,500 (11' 5 25/32")	055.3171.350
		6,000 (19' 8 7/32")	055.3171.600

Panels

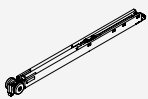


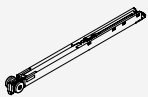
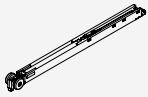
		mm (inch)	No.
	Panel for 053.3339., aluminum, anodized	2,500 (8' 2 7/16")	053.5050.250
		3,500 (11' 5 25/32")	053.5050.350
		6,000 (19' 8 7/32")	053.5050.600

Clip-on components

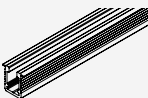
		No.
	Clip component for wooden panel, for 053.3339, every 700-800 mm (2' 3 9/16" to 2' 7 15/32"), aluminum, pre-drilled	053.5051.001

Soft close up to 15/26/36 kg (33/57/79 lbs.)



	No.
Soft close, up to 15 kg (33 lbs.)	057.3159.071
Soft close, up to 26 kg (57 lbs.)	057.3159.072
Soft close, up to 40 kg (88 lbs.)	057.3159.073

		057.3159.071	057.3159.072	057.3159.073	No.
Set consisting of:					
	Soft close, up to 15 kg (33 lbs.)	2			057.3156.071
	Release piece soft close	2	2	2	057.0182.101
	Thread rolling rounded head screw, M2.5x5 mm (3/32"x3/16"), steel, zinc-plated	2	2	2	600.0000.764
	Soft close, up to 26 kg (57 lbs.)		2		057.3156.072
	Soft close, up to 40 kg (88 lbs.)			2	057.3156.073

Guide tracks 4-point guidance




		mm (inch)	No.
	Single guide track, for glue fixing, aluminum, anodized	6,000 (19' 8 7/32")	053.3296.600

Components 4-point guidance


		No.
	Bottom guide Hawa Clipo IS/Hawa Regal C 16, plastic, anthracite	040.3124.071
	Stopper guide track, plastic, grey	053.5094.071

Door centering

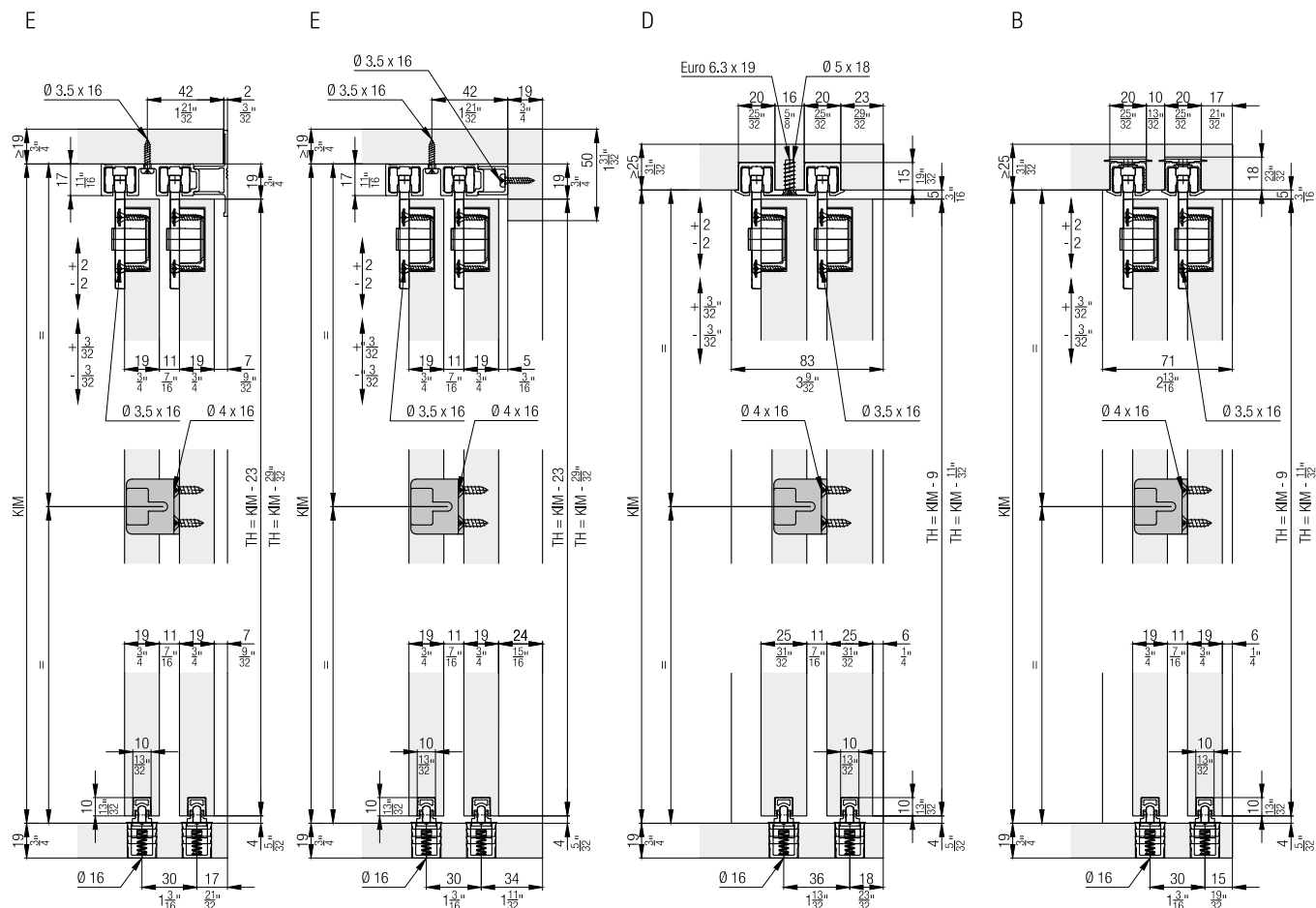
	No.
Door centering, plastic, anthracite, for 2 doors	053.3207.071

		053.3207.071	No.
Set consisting of:			
	Housing door centering, plastic, anthracite	2	053.5014.001
	Pin door centering, plastic, anthracite	2	053.0171.001
	Rubber buffer, plastic, grey	1	025.0107.001

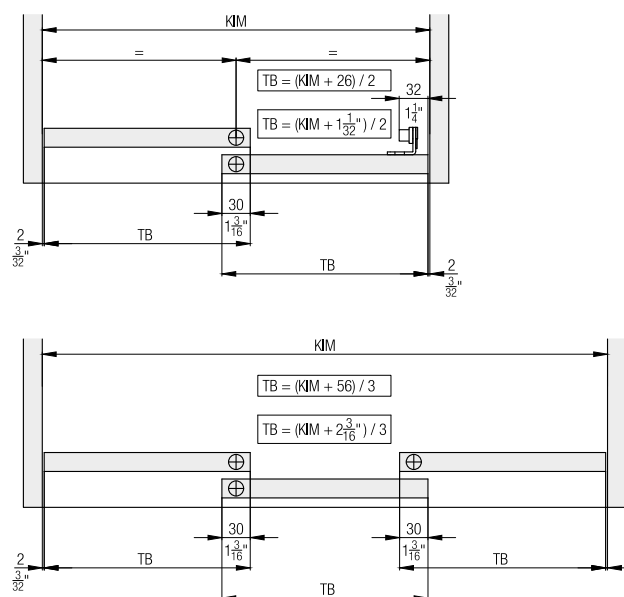
Accessories

		No.
	Track cleaner, plastic, red	040.3142.071

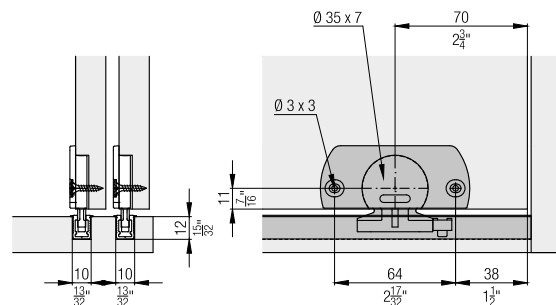
Further installation examples



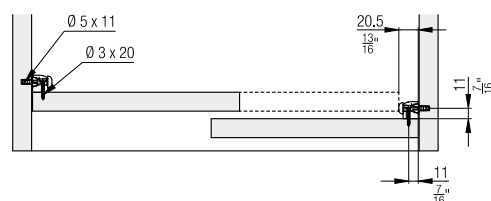
Calculations



4 point guidance



Door centering

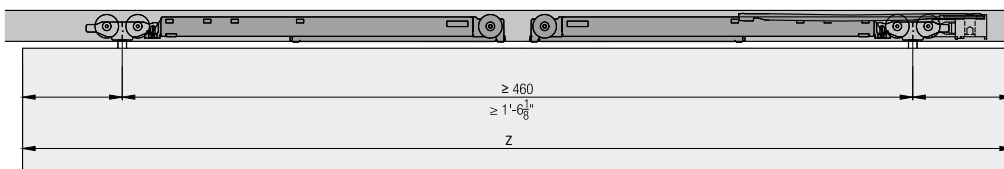
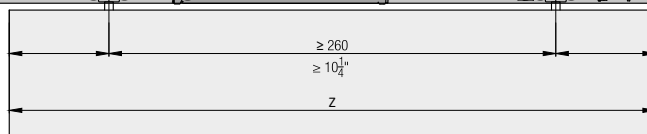


Soft close



	Z ≥	
	1	2
Hawa Porta 40 H	1' 4 ¹⁷ / ₃₂ "	2' 0 ¹³ / ₃₂ "
Hawa Porta 40 GE	1' 2 ¹³ / ₁₆ "	1' 10 ¹¹ / ₁₆ "
Hawa Clipo 26 H IS	1' 4 ¹⁷ / ₃₂ "	2' 0 ¹³ / ₃₂ "
Hawa Clipo 26 H MS	1' 6 ¹ / ₃₂ "	2' 1 ²⁹ / ₃₂ "
Hawa Clipo 36 H IS	1' 4 ¹⁷ / ₃₂ "	2' 0 ¹³ / ₃₂ "
Hawa Clipo 36 H MS	1' 6 ¹ / ₃₂ "	2' 1 ²⁹ / ₃₂ "
Hawa Clipo 36 HM IS	1' 4 ¹⁷ / ₃₂ "	2' 0 ¹³ / ₃₂ "
Hawa Clipo 26 GR IS	1' 4 ¹⁷ / ₃₂ "	2' 0 ¹³ / ₃₂ "
Hawa Clipo 36 G IS	1' 4 ¹⁷ / ₃₂ "	2' 0 ¹³ / ₃₂ "
Hawa Clipo 36 GPK IS	1' 4 ¹⁷ / ₃₂ "	2' 0 ¹³ / ₃₂ "
Hawa Clipo 36 GPPK IS	1' 4 ¹⁷ / ₃₂ "	2' 0 ¹³ / ₃₂ "
Hawa Regal C 26 HM IS	1' 4 ¹⁷ / ₃₂ "	2' 0 ¹³ / ₃₂ "
Hawa Regal C 26 GR IS	1' 3 ³ / ₄ "	1' 11 ⁵ / ₈ "

	Z ≥	
	1	2
Hawa Porta 40 H	420	620
Hawa Porta 40 GE	376	576
Hawa Clipo 26 H IS	420	620
Hawa Clipo 26 H MS	458	658
Hawa Clipo 36 H IS	420	620
Hawa Clipo 36 H MS	458	658
Hawa Clipo 36 HM IS	420	620
Hawa Clipo 26 GR IS	420	620
Hawa Clipo 36 G IS	420	620
Hawa Clipo 36 GPK IS	420	620
Hawa Clipo 36 GPPK IS	420	620
Hawa Regal C 26 HM IS	420	620
Hawa Regal C 26 GR IS	400	600



Accessories

– Straightening fitting from page 266

Planning/execution

Further information about the product can be found on www.hawa.com.